

AGENDA

Meeting: Trowbridge Area Board
Place: County Hall, Bythesea Road, Trowbridge, BA14 8JN
Date: Thursday 9 January 2020
Time: 7.00 pm

Including the Parishes of: Trowbridge, West Ashton, North Bradley, Southwick and Hilperton

The Area Board welcomes and invites contributions from members of the public. The chairman will try to ensure that everyone who wishes to speak will have the opportunity to do so.

If you have any requirements that would make your attendance at the meeting easier, please contact your Democratic Services Officer.

Refreshments and networking opportunity from 6:30pm .

Please direct any enquiries on this Agenda to Kieran Elliott
kieran.elliott@wiltshire.gov.uk, direct line or email kieran.elliott@wiltshire.gov.uk

All the papers connected with this meeting are available on the Council's website at www.wiltshire.gov.uk

Press enquiries to Communications on direct lines (01225) 713114 / 713115.

Wiltshire Councillors

Cllr Andrew Bryant, Drynham
Cllr Ernie Clark, Hilperton
Cllr Peter Fuller, Park
Cllr David Halik, Grove
Cllr Edward Kirk, Adcroft (Chairman)
Cllr Steve Oldrieve, Paxcroft
Cllr Stewart Palmen, Central
Cllr Horace Prickett, Southwick (Vice-Chairman)
Cllr Jo Trigg, Lambrok

Recording and Broadcasting Information

Wiltshire Council may record this meeting for live and/or subsequent broadcast on the Council's website at <http://www.wiltshire.public-i.tv>. At the start of the meeting, the Chairman will confirm if all or part of the meeting is being recorded. The images and sound recordings may also be used for training purposes within the Council.

By entering the meeting room you are consenting to being recorded and to the use of those images and recordings for broadcasting and/or training purposes.

The meeting may also be recorded by the press or members of the public.

Any person or organisation choosing to film, record or broadcast any meeting of the Council, its Cabinet or committees is responsible for any claims or other liability resulting from them so doing and by choosing to film, record or broadcast proceedings they accept that they are required to indemnify the Council, its members and officers in relation to any such claims or liabilities.

Details of the Council's Guidance on the Recording and Webcasting of Meetings is available on request. Our privacy policy can be found. [here](#).

Parking

To find car parks by area follow [this link](#). The three Wiltshire Council Hubs where most meetings will be held are as follows:

County Hall, Trowbridge
Bourne Hill, Salisbury
Monkton Park, Chippenham

County Hall and Monkton Park have some limited visitor parking. Please note for meetings at County Hall you will need to log your car's registration details upon your arrival in reception using the tablet provided. If you may be attending a meeting for more than 2 hours, please provide your registration details to the Democratic Services Officer, who will arrange for your stay to be extended.

Public Participation

Please see the agenda list on following pages for details of deadlines for submission of questions and statements for this meeting.

For extended details on meeting procedure, submission and scope of questions and other matters, please consult [Part 4 of the council's constitution](#).

The full constitution can be found at [this link](#).

For assistance on these and other matters please contact the officer named above for details

	Time
<p>1 Apologies</p> <p>To receive any apologies for absence.</p>	7.00pm
<p>2 Minutes (<i>Pages 7 - 42</i>)</p> <p>To approve the minutes of the meeting held on 7 November 2019.</p>	
<p>3 Declarations of Interest</p> <p>To receive any declarations of disclosable interests or dispensations granted by the Standards Committee.</p>	
<p>4 Chairman's Announcements (<i>Pages 43 - 56</i>)</p> <p>To include the following:</p> <ul style="list-style-type: none"> a) Motiv8 Children's and Young People's Service b) Community Governance Review c) Volunteering on Wilts Council owned land d) British Telecom Proposed Payphones Removal Consultation e) Flood Resilience 	
<p>5 PCC Precept Consultation</p> <p>To receive an update from the Office of the Police and Crime Commissioner.</p>	7.10pm
<p>6 Changes to Kerbside Collection</p> <p>To receive a presentation on changes to kerbside waste collections.</p>	7.20pm
<p>7 Partner Updates</p> <p>To note the written reports and receive any updates from the following:</p> <ul style="list-style-type: none"> a) Wiltshire Police b) Dorset and Wiltshire Fire and Rescue Service c) Town and Parish Councils d) Local Youth Network e) Trowbridge Wellbeing Centre Development Group/Update on East Wing f) Safer and Supportive Communities Group g) Health and Wellbeing Group 	7.30pm

8 **Funding_**(Pages 57 - 96)

7.55pm

8a **Longfield Muga Enhancement**

Applicant: Trowbridge Sports Forum Project Title: Longfield Muga Enhancement View full application	£20000.0 0
--	---------------

8b **Other grants**

8.10pm

Applicant: HELP Counselling Services Project Title: Expansion of the Service View full application	£660.00
Applicant: Trowbridge Town Football Club Project Title: Woodmarsh View full application	£4030.0 0
Applicant: Richmond Fellowship Project Title: The Wiltshire Hearing Voices Group View full application	£985.80

Youth Grants

Applicant: Wiltshire YFC Project Title: Wiltshire YFC 2020 Trowbridge Summer Pop Up Event	£3000.00
Applicant: Trowbridge Community Area Future Project Title: Trowbridge Future	£5000.00
Applicant: Young Melksham Project Title: No Limits SEND Youth Club	£1500.00
Applicant: Wiltshire Council Project Title: Trowbridge Club 1 Free Gym Referral Programme	£4800.00

9 **Homelessness and Rough Sleeping Update**

8.45pm

To receive an update on homelessness and rough sleeping in the Trowbridge area.

10 **Woodland proposal - Wiltshire West District Scout Association**

8.55pm

To note details of a potential project from Wiltshire West District Scout Association.

11 **Urgent items**

9.05pm

Any other items of business which the Chairman agrees to consider as a matter of urgency.

This page is intentionally left blank

MINUTES

Meeting: Trowbridge Area Board
Place: The Cotswold Space - County Hall, Trowbridge BA14 8JN
Date: 7 November 2019
Start Time: 7.00 pm
Finish Time: 9.10 pm

Please direct any enquiries on these minutes to:

Kieran Elliott [committee@wiltshire.gov.uk](mailto:kieran.elliott@wiltshire.gov.uk), Tel:01225 718504 or (e-mail) kieran.elliott@wiltshire.gov.uk

Papers available on the Council's website at www.wiltshire.gov.uk

In Attendance:

Wiltshire Councillors

Cllr Andrew Bryant, Cllr Ernie Clark, Cllr Peter Fuller, Cllr David Halik, Cllr Edward Kirk (Chairman), Cllr Stewart Palmen and Cllr Horace Prickett (Vice-Chairman)

Cllr Gavin Grant

Total in attendance: 31

<u>Agenda Item No.</u>	<u>Summary of Issues Discussed and Decision</u>
57	<p><u>Apologies</u></p> <p>Apologies for absence were received from Councillor Steve Oldrieve.</p>
58	<p><u>Minutes</u></p> <p>The minutes of the meeting held on 19 September 2019 were presented for consideration, and it was,</p> <p><u>Resolved:</u></p> <p>To approve and sign the minutes as a true and correct record.</p>

59	<p><u>Declarations of Interest</u></p> <p>Councillor Edward Kirk declared an interest in a public query which was raised under Minute 61 by the manager of a preschool at Holbrook School, as he had contracts to supply uniforms to early years at Holbrook.</p>
60	<p><u>Chairman's Announcements</u></p> <p>Details were provided on the timescales for the Community Governance Review which had commenced on 1 November 2019, as well as details of requested schemes which had already been submitted by local parishes. Initial comments could be made against submitted schemes, and there would be consultation taking place in 2020.</p>
61	<p><u>Public Questions</u></p> <p>The Area Board received a statement from the manager of a preschool at Holbrook School regarding their lease of a building on the site and amounts which had been requested for maintaining the building. The Community Engagement Manager provided additional details from the Wiltshire Council Estates Team.</p> <p>The Area Board noted the comments and ongoing negotiations, and several members noted they would support efforts to help keep the preschool at its present location.</p>
62	<p><u>Partner Updates</u></p> <p>Updates from partners were received as follows:</p> <ul style="list-style-type: none"> <li data-bbox="363 1308 1497 1532"> <p>i. Wiltshire Police</p> <p>The written update was noted. In a verbal update it was noted a reorganisation of the neighbourhood teams would mean Westbury, Warminster, Tisbury and Mere would no longer be in the same wide area as Trowbridge. There were also queries relating to police action, where appropriate, to anti-social behaviour and begging.</p> <li data-bbox="363 1563 1497 1637"> <p>ii. Dorset Wiltshire Fire and Rescue Service</p> <p>The written update was noted.</p> <li data-bbox="363 1668 1497 2011"> <p>iii. Town and Parish Councils</p> <p>The written update from Trowbridge Town Council was received. It was noted that Trowbridge contained the only Lower Super Output Area in Wiltshire which was within the bottom 10% of areas in England in terms of deprivation, and had two other areas of high deprivation. Communication would take place with Wiltshire Council on how the areas could receive more assistance. It was also stated the Council had received a Gold award for the investment in and quality of its staff, which only 16% of organisations who applied received.</p>

	<p>In response to queries it was stated that the town council was calculating how much it was reasonable to charge for the use of their newly acquired street sweeper, and would be happy to hire it out to other parishes.</p> <p>From North Bradley it was stated a new member had been co-opted to ensure a full complement of members, and there had been increasing issues relating to speeding and HGVs. It was hoped the Neighbourhood Plan would complete the Inspector stage within a week or two, although there might be delay due to the elections.</p> <p>The parish would also coordinate with other rural parishes around Trowbridge regarding the Community Governance Reviews.</p> <p>From Hilperton it was also confirmed that after co-option the council was up to a full complement of members. There were surveys ongoing regarding blocking off the Devizes Road, in relation to traffic issues through the village.</p> <p>iv. Local Youth Network Secondary schools would be met with the week after the area board meeting, and there was interest in seeing if a school would be interested in hosting an area board meeting.</p> <p>v. Trowbridge Community Area Future (TCAF) The written report was noted, and it was noted that the organisation was changing its name to simply Trowbridge Future.</p>
63	<p><u>Rough Sleeping</u></p> <p>The Chairman introduced the item, noting that he had previously had a very closed view of rough sleeping and of rough sleepers, but that after witnessing the work of the Haven project along with Alabare and the Rough Sleeper team, had changed his perspective, and so had arranged the agenda item to inform Members of the nature of the issue and how it was being tackled.</p> <p>A presentation was received noting the creation of the Rough Sleeping team in October 2018 following a rise in rough sleeping. Beds were funded at Haven in Trowbridge, and others around the county. Outreach team members would seek in a persistent manner to understand the reasons someone had become homeless, and come up with a plan to find accommodation and help with other issues. It was acknowledged some rough sleepers did not want to engage, but teams continually sought to improve this.</p> <p>The area board discussed the presentation, seeking details of how many rough sleepers there were, trauma and substance abuse support, assisting in the claiming of benefits, preventative measures to work with the housing options team to stop someone becoming homeless in the first place, as there was now a</p>

	<p>duty to assign a prevention officer. Details were provided of the Haven project, and the need to tackle the problems leading to homelessness, not just move the problem on.</p> <p>A statement was also received from Revered Dearlove from Breakthrough Trowbridge, that the work of his organisation running day centre for four years had not received support from the council, and that many people were suffering as a result.</p> <p>It was noted that a new Homeless strategy would be considered by the Council on 2 November, and that outreach work was needed, as in some cases this only extended to a bed for the night..</p> <p>On a proposal from Councillor Edward Kirk, seconded by Councillor Horace Prickett, and after debate, it was,</p> <p><u>Resolved:</u></p> <p>That up to £5000.00 be made available from Area Board funds for the Community Engagement Manager to provide support to appropriate agencies and groups to seek to increase activities during the day in particular for outreach and support.</p>
64	<p><u>Economic Development and East Wing Update</u></p> <p>Chris Hilton, Interim Head of Economic Development, provided an update on economic development within Trowbridge. A presentation is attached to these minutes.</p> <p>In relation to the Trowbridge Masterplan, which identified zones of development and enhancement across the town centre, this had been approved a number of years ago and it was intended there be a refresh to identify what had not been delivered, and if it had not could it still be delivered. Consultants had been procured for this work in order to enable the bidding of government funding, with a business case draft to be considered it was intended in March 2020, and a bid in June 2020.</p> <p>In relation to the East Wing site opposite County Hall, it was confirmed the Clinical Commission Group had decided not to utilise the site, and there remained concerns regarding leisure options on the site. The leisure aspects were being identified from December 2019 to March 2020, with an options analysis prepared for April 2020.</p> <p>The Board discussed the update, with the Trowbridge Wellbeing Centre Development Group asking that the existing feasibility study for East Wing be used to speed the process, and that workshops be held to discuss options as they emerged.</p>

	<p><u>Resolved:</u></p> <p>To note the update</p> <p>Councillors Peter Fuller and Ernie Clark left the meeting at 2100.</p>
65	<p><u>Funding</u></p> <p>The Area Board deferred consideration of the grants included with the agenda pack.</p> <p><u>Community Area Transport Group</u></p> <p>An update was received on recent work of the CATG. It was then</p> <p><u>Resolved:</u></p> <p>To approve Issue 19-19-3 Broadcloth Lane, Clothyard and Weavers Drive, Trowbridge – 20mph speed limit assessment - £1875 subject to Trowbridge Town Council contribution of £625</p> <p>To approve Issue 16-19-4 (also 16-19-10)College Road/Sycamore Grove, Trowbridge – additional bollards - £750 subject to Trowbridge Town Council contribution of £250</p> <p><u>Signage</u></p> <p>The Board was provided estimated costs for production for plaques and other signage for larger capital projects to indicate the Area Board had funded or part funded those projects, with ranges from £80-120 per plaque.</p> <p>It was agreed that Members could request such plaques, and this could be circulated to other members between board meetings for consideration.</p>
66	<p><u>Urgent items</u></p> <p>There were no urgent items.</p>

This page is intentionally left blank

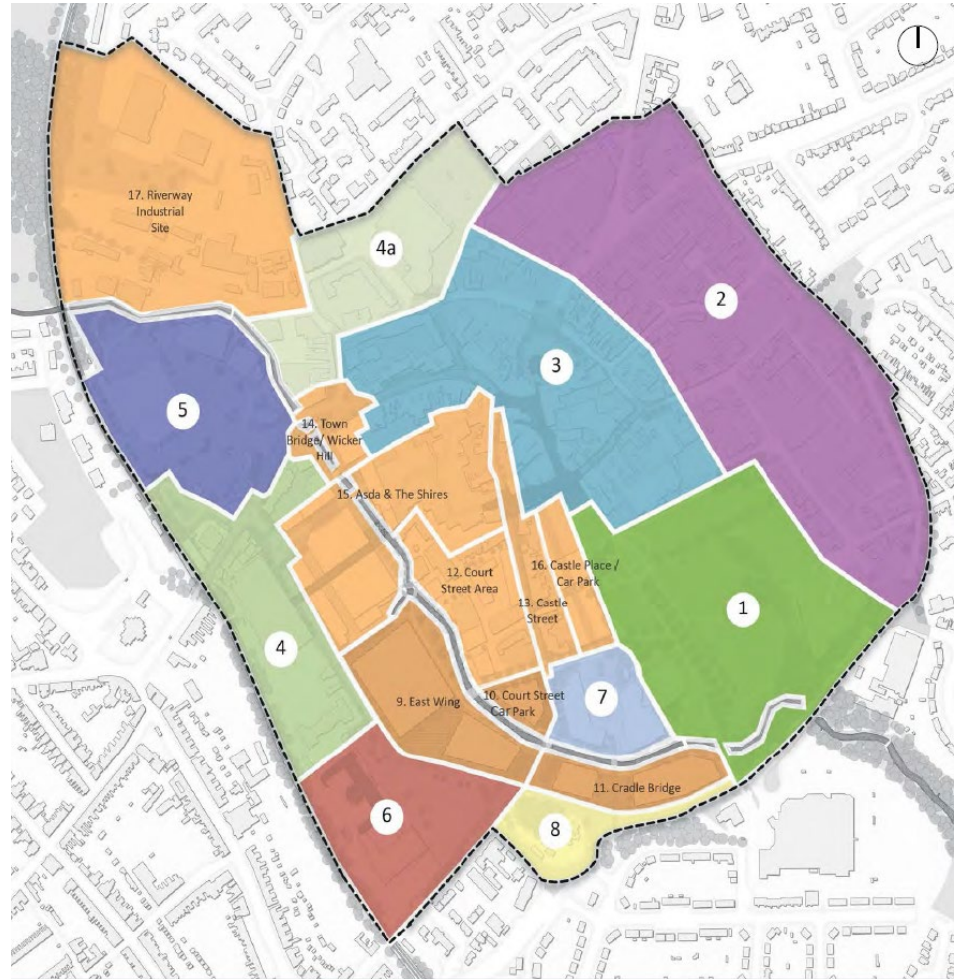
Trowbridge Area Board Update November 2019

Chris Hilton MRICS
Interim Head of Economic Development

Contents

- Trowbridge Masterplan 2014
- Masterplan Refresh and Future High Streets Fund Bid
- East Wing Update

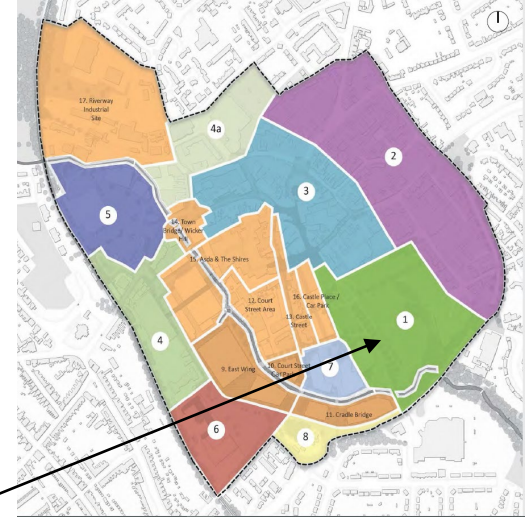
Trowbridge Masterplan 2014



Area 1 - Peoples Park

High quality Civic and public open spaces

- Improved activity around the edges of the park and quality of sports and recreation facilities
- Improvements to way parking and linages with town centre and edge of centre retail and leisure



Area 2 - North east edge of centre

Professional services, secondary retail and residential uses

- Improved functional links with town centre through improvements to public realm and way marking

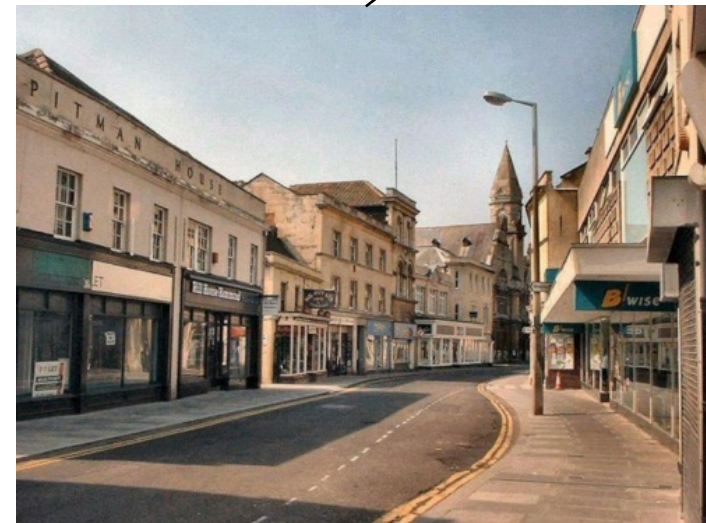


The Halve

Area 3 - Historic town centre

Retail and service core

- Improved public realm and relationship with the riverside
- Explore opportunities for above ground residential uses and office accommodation



Area 4/4a - Edge of centre

Bythesea road/ Wicker Hill / Stallard street – edge of centre retail, small retail units and residential users

Page 19

- Transport interchange – seek enhancements to improve public realm, way making and links to the town centre and edge of centre users



Area 5 – Bowyers/Innox Mills

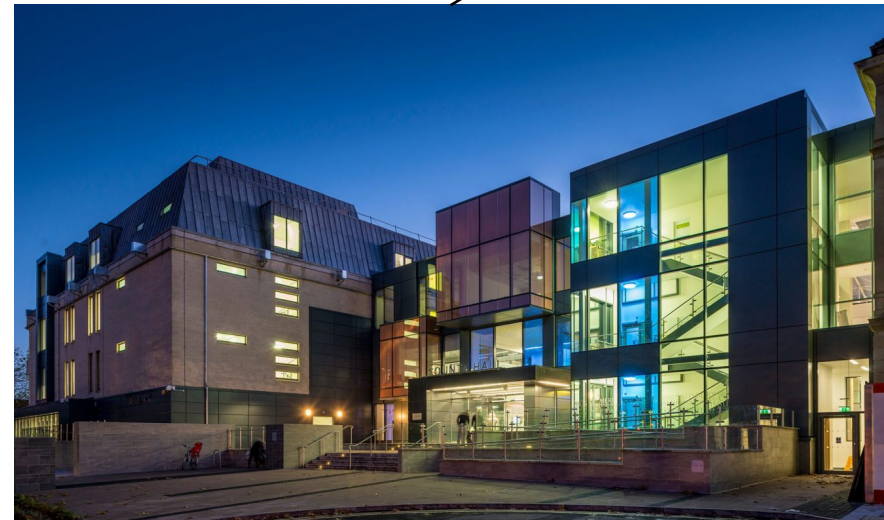
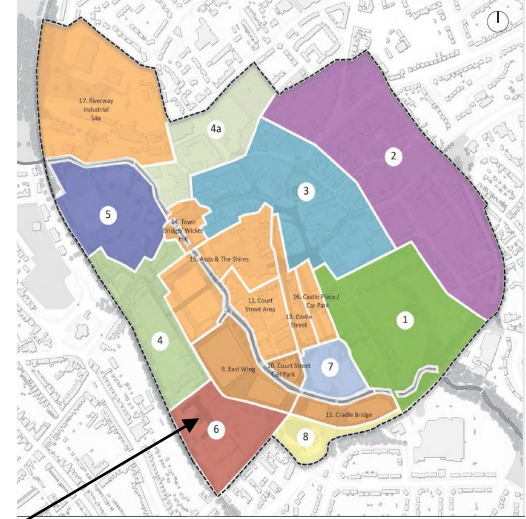
- Comprehensive redevelopment of the site comprising a food store, non-food retail units, leisure floorspace, food and drink floorspace and associated petrol filling station



Area 6 - County Hall

Primary county town administrative building including library and café

- Enhance linkages to transport interchanges and town and edge of centre users



Area 7 - St Stephens Place



Implemented scheme

- Comprehensive redevelopment of the site comprising multi-screen digital cinema, hotel, restaurants/cafes/bars/retail and associated car parking, public realm and pedestrian cycle links

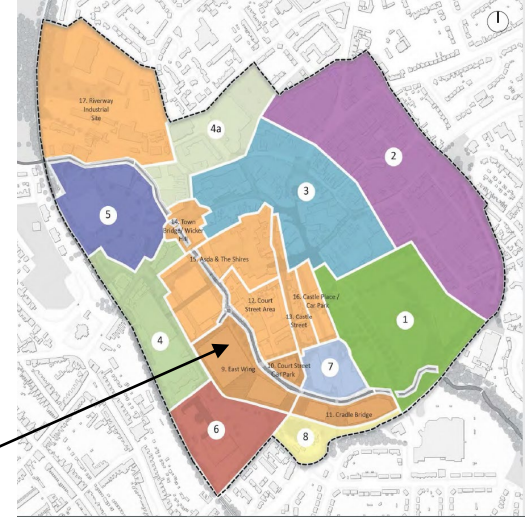
Page 28



Area 9 - East Wing

Site now cleared

- Comprehensive redevelopment of east wing supporting high quality, vibrant, mixed use development. As part of a series of new linked destinations along the river corridor.

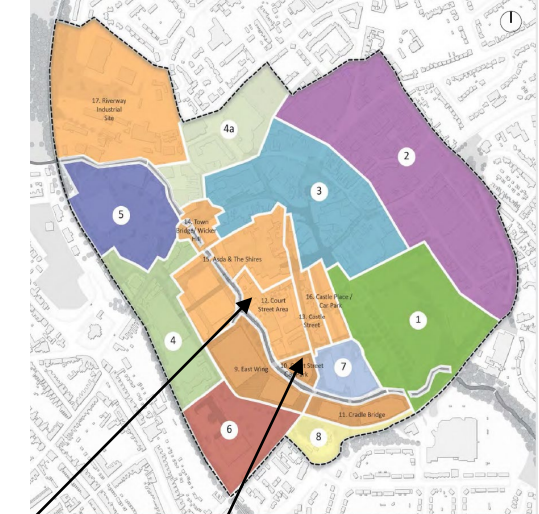


Area 10 & 12 - Court Street & Area

Council owned car park

Existing employment area comprising of under-used former mill building, warehouses, workshops and office accommodation

- Create an attractive working environment supporting innovation and growth in independent, cultural and creative business.
- Protect and enhance the existing heritage assets of the area and provide new pedestrian links with the river. Improve public realm and the traditional warehouse facades

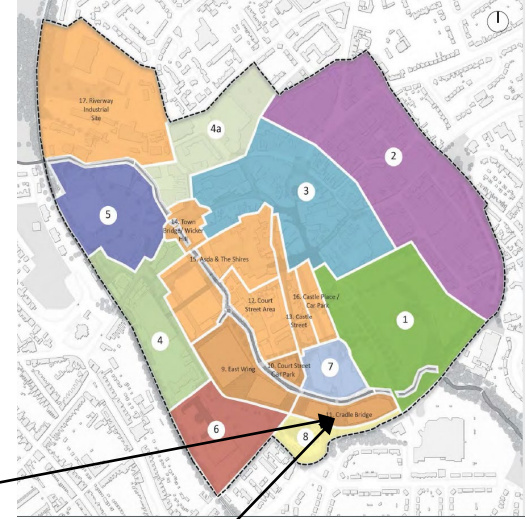


Area – 11 Cradle Bridge



Former 'Peter Black' site comprising vacant buildings and external servicing

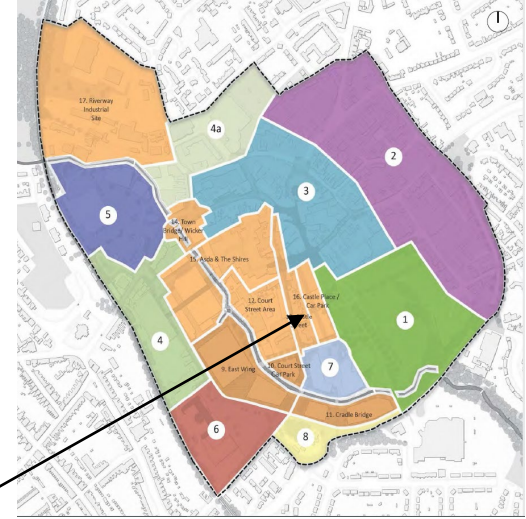
- Comprehensive redevelopment of East Wing, Court Street car park and Cradle Bridge supporting high quality, vibrant, mixed use development.
- As part of a series of new linked destinations along the river corridor and encourage people to make linked trips.
- Establish a new east-west pedestrian and cycle link across the River Biss.



Area 13 - Castle Street

Key north – south route into the historic core supporting a mix of smaller independent businesses, some units remain vacant

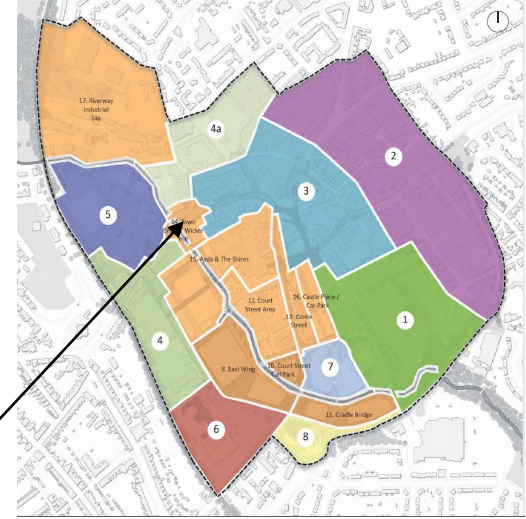
- Support complementary retail, leisure and commercial uses allowing for mix day and night time activity.
- Castle street as a key walking street encouraging links trips.
- Support potential future redevelopment of the toy store/garage to accommodate larger retail units.



Area 14 - Town Bridge / Wicker Hill

An important access point and gateway to the town and the river

- Creation of a new civic spaces at town bridge focused on the River Biss through comprehensive public realm works
- Maximise active development frontage onto the River Biss corridor and Wicker Hill



Area 15 - Asda and The Shires

Shopping centre, car park, supermarket and servicing

Page 28

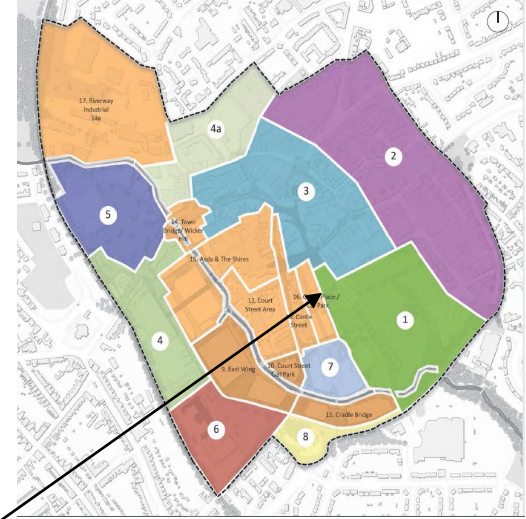
- To improve public realm, waymarking and relationship with the riverside, the historic core, the Gateway development and railway station
- Explore opportunities to reconfigure space to provide larger retail units set with an attractive environment.



Area 16 - Castle Place & Car park

Shopping centre, multi-storey car park and leisure centre

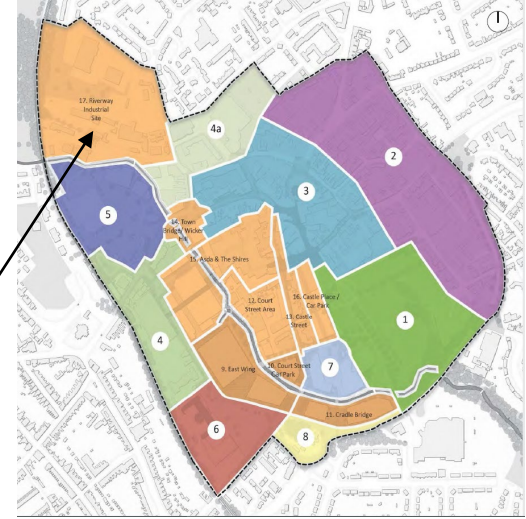
- Facilitate longer term redevelopment if the wider parking strategy for Trowbridge can be achieved.
- Support vibrant and mixed use development to encourage people to make linked trips



Area 17 - River way Industrial site (shails)

Light industrial and recycling facilities

- Facilitate longer term redevelopment opportunity for a mix of uses to include housing, office, business and/or leisure uses.
- Prepare a site specific development brief setting out the development and design principles.



Other opportunities?

Trowbridge Town Hall Trust

Page 28



The Masterplan Refresh

- A quick exercise. FHSF is not about doing more plans.
- Delivery Plan is key.
- Next step is delivery



Inner Circle Consulting - an award-winning consultancy - strategy development, programme management and project delivery in public sector regeneration.



LB Waltham Forest
Town Hall Campus
Redevelopment



Transforming Walthamstow's
EMD Cinema



West King Street renewal_Ha...
Hammersmith and Fulham



Cornwall Council
Pydar Street Development



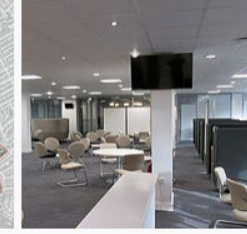
North Yorkshire
OPE



St Neots
Masterplan for Growth



LB Haringey
Wood Green Regeneration
Programme



LB Haringey
Future Ways of Working
Programme



Bath and NE Somerset Council
Customer Access Programme



LB Waltham Forest
Housing Direction of Travel



LB Waltham Forest
Property Transformation
Strategy



Isle of Wight Council
Regeneration Programme



Isle of Wight Council
Extra Care Investment



LB Barking and Dagenham
'Be First' Company Set-up



Isle of Wight
One Public Estate Programme



LB Hillingdon Strategic
Infrastructure Plan



Hayes Development
Funding Strategy



Home Office Headquarters
Rationalisation



Bath and NE Somerset Council
Workplaces Programme



Home Office
Smarter Working Programme



CG - Department of Education
Old Admiralty Building



London Cancer Hub
Options Appraisal



London Cancer Hub
Programme Management



LB Barnet
Regeneration Programme



LB Harrow
Regeneration Strategy

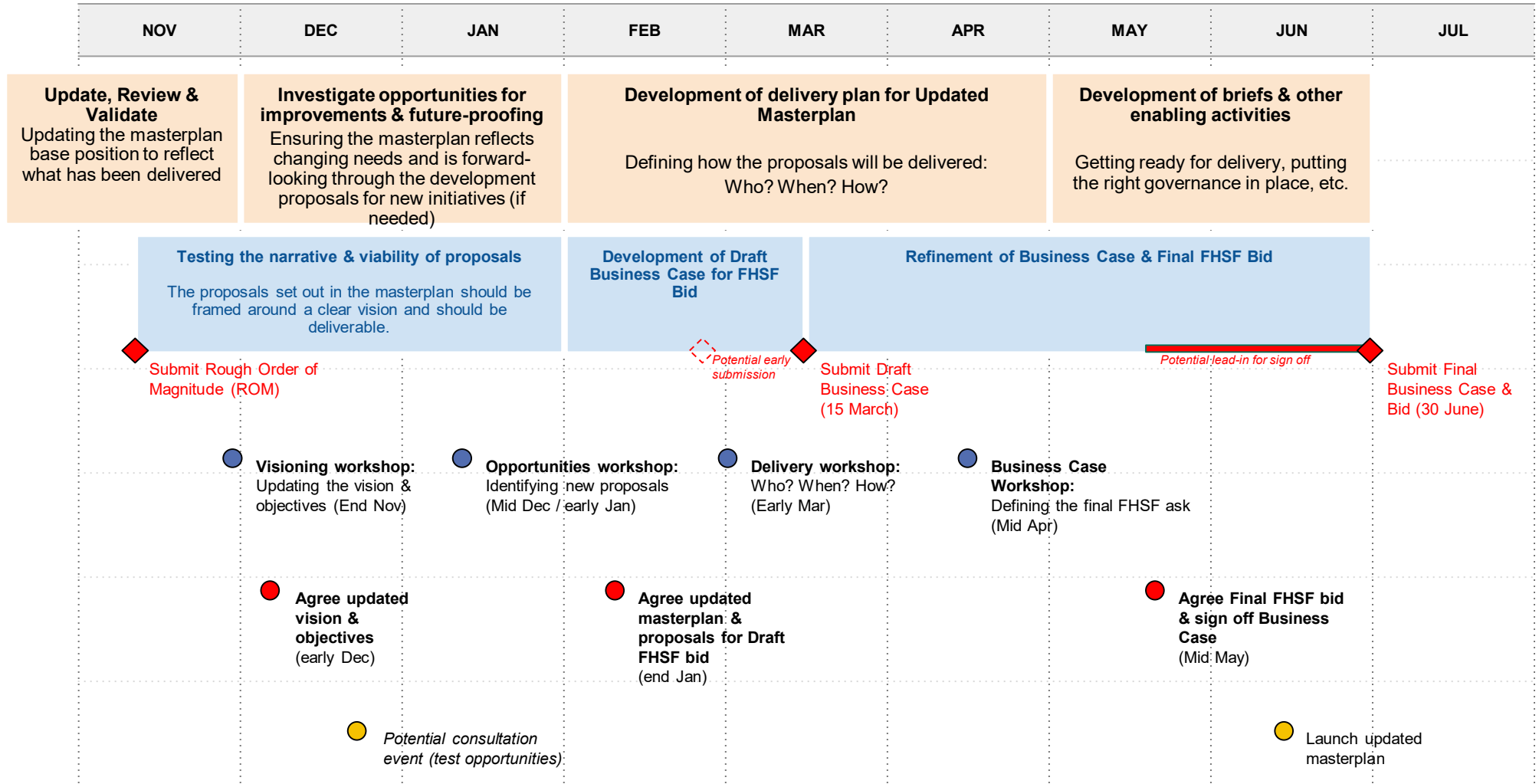


LB Harrow
Civic Centre



LB Harrow
Haslam House

TROWBRIDGE FUTURE HIGH STREET FUND - APPROACH & TIMESCALES



Key

- SB Project Board
- KS Key stakeholders
- ES External Stakeholders
- ◆ M FHSF Milestone

East Wing

CCG commissioned Kavanaghs in April 2019

11 sites long-listed

East Wing - PCT

Criteria	Short description	Weight
Meets service requirement	extent to which the site can accommodate the building and provide expansion space.	20
Meets parking requirement	extent to which the site can accommodate the identified need for parking	10
Location	potential for the site to provide a suitable environment for an ICC	12
Access	road and pedestrian access and transport links	12
Planning	potential for planning to be granted in a timely fashion	8
Site acquisition	tenure being offered and potential for site to be acquired in a timely fashion	8
Deliverability	potential for a development on this site to meet the project programme	15
Value for Money	potential to provide value for money	15

East Wing - PCT

	Site	Raw score	Raw rank	Weighted score	Weighted rank
1	East Wing	58	=4	713	5
4	South Trowbridge Business Park, West Ashton Road	58	=4	747	4
6	The Pavilions, White Horse Business Park	63	2	803	2
7	Trowbridge Community Hospital and vacant land adjacent	74	1	925	1
8	Land adjacent to The Pavilions, White Horse Business Park	62	3	781	3
11	Castle Place Shopping Centre	56	6	694	6

East Wing - PCT

Site	No weights	Original weights	Simple reverse	Greater reverse	Extreme reverse	Remove vfm and equal weights
East Wing	=4	5	4	4	4	4
S. Trowbridge Business Park, West Ashton Road	=4	4	5	5	6	5
The Pavilions, White Horse Business Park	2	2	2	2	3	=2
Trowbridge Community Hosp and vacant land adjacent	1	1	1	1	1	1
Land adjacent The Pavilions, White Horse Business Park	3	3	3	3	2	=2
Castle Place Shopping Centre	6	6	6	6	5	6

East Wing

Two shortlisted:

- *The existing Trowbridge Community Hospital Site and vacant land*
- *The Pavillions, White Horse Business Park*

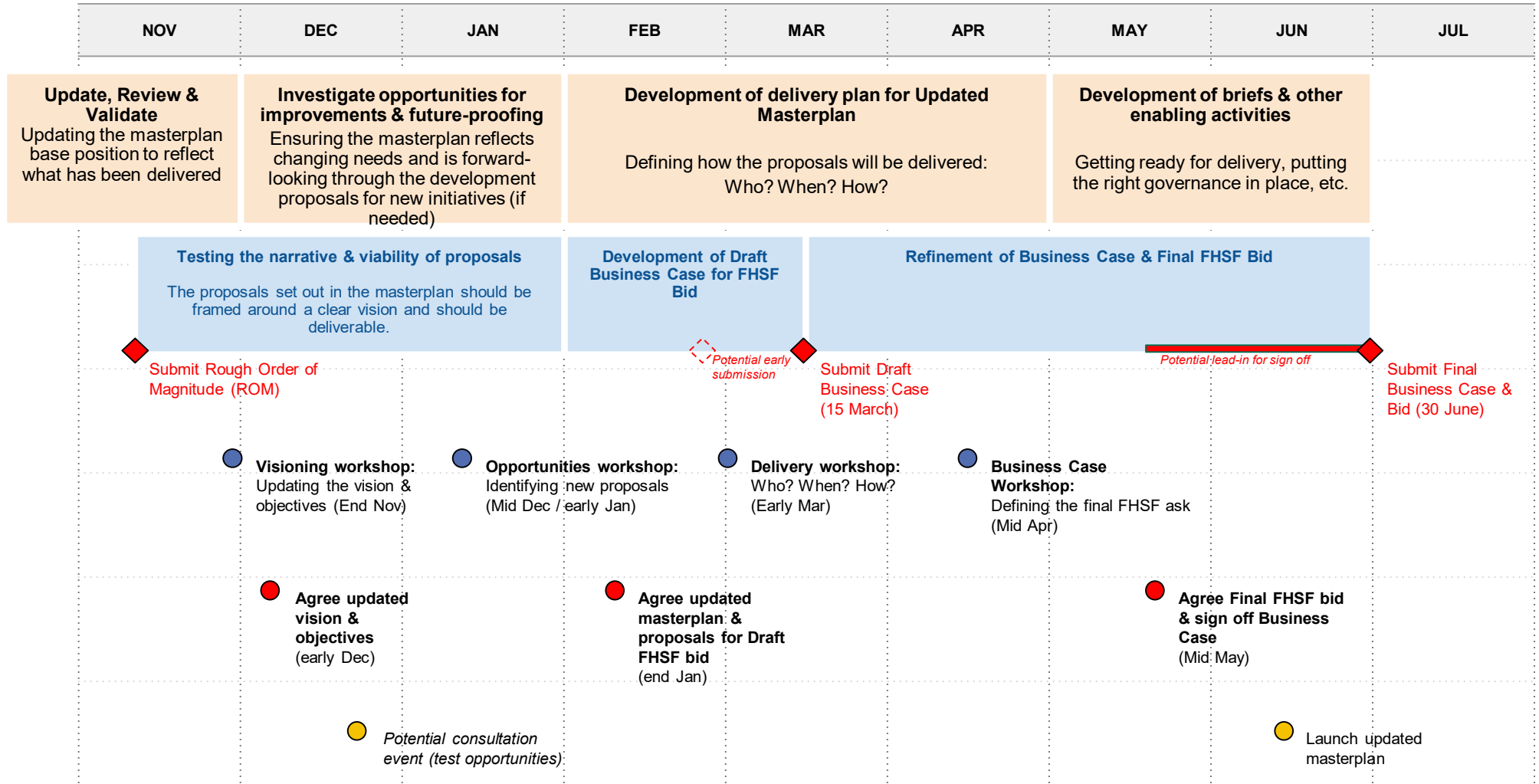
Trowbridge Community Hospital site preferred.

East Wing – Leisure Centre

- Wiltshire-wide Leisure Study – March 2020
- Site Options Analysis – April 2020
- Options for East Wing – December 2019 to March 2020

Cabinet decision

TROWBRIDGE FUTURE HIGH STREET FUND - APPROACH & TIMESCALES



Key

- SB Project Board
- KS Key stakeholders
- ES External Stakeholders
- ◆ M FHSF Milestone

Agenda Item 4

Chairman's Announcements

Subject:	Motiv8 Children's and Young People's Service
Web contact:	https://www.dhi-online.org.uk/get-help/young-peoples-drug-alcohol-services/motiv8

Our objectives are to engage with young people's groups and in turn promote the availability of the service for young people.

About the service:

Motiv8 provide support services in Wiltshire for children and young people, up to their 18th birthday, with problematic substance use, and for children, young people and families affected by parental substance use. Its primary objective is to improve the health, welfare and life chances of those vulnerable to, or experiencing, substance misuse.

Motiv8 provide advice, guidance and one-to-one sessions for young people who are having problems with drugs and/or alcohol. The service is free and confidential, and aim to provide a flexible and non-judgemental space for young people to be open about the problems they are facing.

How we help:

Motiv8 sees young people in and around Wiltshire, in their communities; at schools, colleges and home visits.

Our services include:

- Brief interventions
- Crime Prevention - community resolutions
- Individual sessions
- Outreach
- Groupwork
- Harm reduction information and advice
- Signposting to other services
- Workshops and training for professionals
- Workshops and training for young people

Motiv8 Team Manager:

Natalie Huggins

Please contact should you require any further information about the service.

Phone

0800 1696136

Email

info@dhimotiv8.org.uk

Instagram

dhimotiv8

This page is intentionally left blank

Chairman's Announcements

Subject:	British Telecom Proposed Payphones Removal Consultation
Web contact:	mary.moore@wiltshire.gov.uk

The council has received notification from BT regarding consultation on its current programme of proposed public payphone removals. The relevant Area Boards should be aware of the affected payphones in their local community, by referring to the detailed enclosed sheet.

There are currently 71 public payphones with low usage levels and BT propose to remove them following a full consultation. BT has also placed consultation notices in the relevant payphone kiosks.

As the local authority, we are required to carry out our own consultation process to canvas the views of the local community. Briefing Note Number 19-033 has been circulated to Wiltshire Councillors and Town and Parish Councils.

Consultation has been initiated to receive reasons for any objections to the removal of specific phones, as a blanket objection is unlikely to carry weight.

BT has provided some examples of factors that may be relevant, full guidance on the removal process on its website (at: <http://stakeholders.ofcom.org.uk/binaries/consultations/uso/statement/removals.pdf>)

BT offers the opportunity for parish councils and registered charities to *adopt a kiosk for just £1, thereby protecting the heritage of the community.

Details about this can also be found on BT's website (at <http://business.bt.com/phone-services/payphone-services/adopt-a-kiosk/>)

The consultation period closes on **28 January 2020**, and responses by end of business **14 January 2020** will enable us to include representations in forming our return to BT. All responses will be collated and directed to a single point of contact at Wiltshire Council: mary.moore@wiltshire.gov.uk
Mary Moore, Economic Development and Planning, who will co-ordinate the response on behalf of the council

*Defibrillators are one possible example of how payphone adoption can be put to a modern and potentially life-saving use, alongside libraries, art projects and information centres to suit individual and local community needs.

This page is intentionally left blank

Please use this annex and return in this format to ensure that the telephone number of the kiosk is clearly shown.

A separate sheet can be used for further comments if required.

If you would like an electronic copy of this letter, please e mail btp.authorisation.team@bt.com

Wiltshire

	Telephone Number	Address	Post Code	Number of calls in last 12 months	Posting Completed Date	Agree/ Adopt/ Object	Comments/Reasons
1	01225751464	PCO PCO1 TOWN BRIDGE TROWBRIDGE	BA14 8JZ	502	10/10/2019		
2	01225751467	PCO PCO1 LARKDOWN TROWBRIDGE	BA14 7JX	0	10/10/2019		
3	01225751468	PCO PCO1 KINGSLEY PLACE TROWBRIDGE	BA14 9TD	3	09/10/2019		
4	01225751471	PCO PCO1 WILTSHIRE DRIVE TROWBRIDGE	BA14 0RX	4	09/10/2019		
5	01225752157	PCO PCO1 CHARLES STREET TROWBRIDGE	BA14 8ND	8	10/10/2019		
6	01225752317	O/S 35 PCO1 FROME ROAD TROWBRIDGE	BA14 0DQ	10	09/10/2019		
7	01225752419	PCO PCO1 WYKE ROAD TROWBRIDGE	BA14 7NP	12	10/10/2019		
8	01225753727	OPP CHARLOTTE SQUARE PCO1 TIMBRELL STREET TROWBRIDGE	BA14 8PL	157	10/10/2019		
9	01225763380	PCO PCO1 KINGSDOWN ROAD TROWBRIDGE	BA14 0LB	7	09/10/2019		
10	01225769088	O/S THE LAMB PUB PCO1 COUNTY WAY TROWBRIDGE	BA14 7AQ	888	09/10/2019		

	Telephone Number	Address	Post Code	Number of calls in last 12 months	Posting Completed Date	Agree/ Adopt/ Object	Comments/Reasons
11	01225782229	PCO THREE LIONS THE STREET HOLT TROWBRIDGE	BA14 6QH	10	09/10/2019		
12	01225782466	PCO PCO1 BROUGHTON GIFFORD MELKSHAM	SN12 8NR	1	25/09/2019		
13	01225790634	PCO PCO1 HALIFAX ROAD BOWERHILL MELKSHAM	SN12 6UG	9	25/09/2019		
14	01225790638	PCO PCO1 LITTLEJOHN AVENUE MELKSHAM	SN12 7AN	14	09/10/2019		
15	01225791079	PCO PCO1 NORRINGTON COMMON BROUGHTON GIFFORD MELKSHAM	SN12 8LR	0	25/09/2019		
16	01225791398	PCO PCO1 BERRYFIELD LANE MELKSHAM	SN12 6EF	12	25/09/2019		
17	01225791466	PCO PCO1 SPA ROAD MELKSHAM	SN12 7NZ	25	25/09/2019		
18	01225811313	PCO PCO1 SANDY LEA AVENUE CORSHAM	SN13 0LU	0	25/09/2019		
19	01225868217	PCO PCO1 ST. LAURENCE ROAD BRADFORD-ON-AVON	BA15 1JG	8	09/10/2019		
20	01249443008	PCO PCO1 LODGE ROAD CHIPPENHAM	SN15 3SY	36	09/10/2019		E393048 N172092

	Telephone Number	Address	Post Code	Number of calls in last 12 months	Posting Completed Date	Agree/ Adopt/ Object	Comments/Reasons
21	01249443212	PCO PCO1 HUNGERDOWN LANE/SOUTHMEAD CHIPPENHAM	SN14 0BB	113	25/09/2019		
22	01249444101	PCO PCO1 NEW ROAD CHIPPENHAM	SN15 1EJ	202	25/09/2019		E391934 N173822
23	01249445416	PCO PCO1 SHELDON ROAD CHIPPENHAM	SN14 0DA	39	25/09/2019		
24	01249653737	PCO PCO1 HUNGERDOWN LANE/SCHOOL WALK CHIPPENHAM	SN14 0BB	1	25/09/2019		
25	01249653763	PCO PCO1 HILL RISE CHIPPENHAM	SN15 1AZ	31	09/10/2019		E392119 N174633
26	01249656242	PCO PCO1 CHARTER ROAD CHIPPENHAM	SN15 2RB	144	25/09/2019		E391666 N172862
27	01249701067	PCO PCO1 DICKETTS ROAD CORSHAM	SN13 9JS	7	25/09/2019		
28	01249701085	PCO PCO1 KINGS AVENUE CORSHAM	SN13 0EF	5	25/09/2019		
29	01249814030	PCO PCO1 WILLIAM STREET CALNE	SN11 9BB	5	26/09/2019		
30	01249821977	PCO PCO1 FOREMAN STREET CALNE	SN11 8PE	10	26/09/2019		

	Telephone Number	Address	Post Code	Number of calls in last 12 months	Posting Completed Date	Agree/ Adopt/ Object	Comments/Reasons
31	01249890217	PCO PCO1 JUNCTION OF CAINE ROAD / HARRO W GROVE LYNEHAM	SN15 4AB	1	26/09/2019		
32	01264790561	OFF MEAD RD PCO1 WOOD PARK LUDGERSHALL ANDOVER	SP11 9NS	5	26/09/2019		
33	01373822507	JUNCTION BROOK LANE PCO1 THE HAM WESTBURY	BA13 4HD	27	10/10/2019		
34	01373822511	PCO PCO1 HEYWOOD WESTBURY	BA13 4LW	3	10/10/2019		
35	01373822739	OPP 51 PHOENIX RISE PCO1 PHOENIX RISE WESTBURY	BA13 3XS	4	10/10/2019		
36	01373832308	PCO PCO1 HIGH STREET CHAPMANSLADE WESTBURY	BA13 4AJ	1	25/09/2019		
37	01380723454	LAYBY O/S B&Q PCO1 LONDON ROAD DEVIZES	SN10 2EP	15	26/09/2019		
38	01380724165	PCO PCO1 EASTLEIGH ROAD DEVIZES	SN10 3EH	28	24/10/2019		
39	01380813321	PCO PCO1 PARSONAGE LANE MARKET LAVINGTON DEVIZES	SN10 4AA	45	26/09/2019		
40	01380813333	PCO PCO1 HIGH STREET EASTERTON DEVIZES	SN10 4NX	1	26/09/2019		

	Telephone Number	Address	Post Code	Number of calls in last 12 months	Posting Completed Date	Agree/ Adopt/ Object	Comments/Reasons
41	01380830450	PCO PCO2 MELBOURNE STREET BRATTON WESTBURY	BA13 4RW	4	10/10/2019		
42	01380860221	PCO PCO1 ALLINGTON DEVIZES	SN10 3NQ	0	26/09/2019		
43	01380860248	PCO PCO1 ETCHILHAMPTON DEVIZES	SN10 3JY	0	26/09/2019		
44	01380870221	PCO PCO1 CHURCH STREET STEEPLE ASHTON TROWBRIDGE	BA14 6EW	0	10/10/2019		
45	01666823594	PCO PCO1 CHARLTON PARK CHARLTON MALMESBURY	SN16 9DG	0	25/09/2019		
46	01672539211	PCO PCO1 WEST OVERTON MARLBOROUGH	SN8 1QE	0	26/09/2019		
47	01672810411	PCO PCO1 EASTON ROYAL PEWSEY	SN9 5LY	1	26/09/2019		
48	01722327596	NR ESSEX SQUARE PCO1 NETHERHAMPTON ROAD SALISBURY	SP2 8HD	25	24/10/2019		
49	01722328206	JNC PEMBROKE RD PCO1 WOODSIDE ROAD SALISBURY	SP2 9EB	0	26/09/2019		
50	01722329347	NR BT CENTRE PCO1 BRUNEL ROAD SALISBURY	SP2 7PJ	4	26/09/2019		E412971 / N130080

	Telephone Number	Address	Post Code	Number of calls in last 12 months	Posting Completed Date	Agree/ Adopt/ Object	Comments/Reasons
51	01722718208	PCO TELEPHONE KIOSK BARBERS LANE HOMINGTON SALISBURY	SP5 4NJ	0	26/09/2019		
52	01722743311	PCO PCO1 BULBRIDGE ROAD WILTON SALISBURY	SP2 0LZ	4	26/09/2019		
53	01722780297	PCO PCO ALVEDISTON SALISBURY	SP5 5JY	0	26/09/2019		
54	01722780325	PCO PCO1 SUNNYSIDE PITTS LANE BISHOPSTONE SALISBURY	SP5 4AH	2	26/09/2019		
55	01747820208	PCO PCO1 FONTHILL GIFFORD SALISBURY	SP3 6PX	11	25/09/2019		
56	01747870391	NR ROYAL OAK INN PCO SWALLOWCLIFFE SALISBURY	SP3 5PA	0	25/09/2019		
57	01793770511	PCO PCO1 RINGSBURY CLOSE PURTON SWINDON	SN5 4DF	0	25/09/2019		
58	01980621092	VILLAGE HALL PCO1 TILSHEAD SALISBURY	SP3 4SF	6	26/09/2019		
59	01980652592	JNC LARKHILL ROAD PCO1 PHILIP ROAD DURRINGTON SALISBURY	SP4 8DT	12	26/09/2019		
60	01980670245	P PCO1 HAXTON SALISBURY	SP4 9PY	1	26/09/2019		

Page 52

	Telephone Number	Address	Post Code	Number of calls in last 12 months	Posting Completed Date	Agree/ Adopt/ Object	Comments/Reasons
61	01980842202	ENSUITE JNC KENNET ROAD PCO1 BOURNE ROAD TIDWORTH	SP9 7RE	90	24/10/2019		
62	01980842208	CORNER OF PCO1 SIDBURY HILL AVENUE TIDWORTH	SP9 7JN	36	26/09/2019		
63	01985218706	PCO PCO1 WOODCOCK ROAD WARMINSTER	BA12 9DQ	0	25/09/2019		
64	01985219405	O/S SAMBOURNE C OF E SCHOOL PCO1 SAMBOURNE ROAD WARMINSTER	BA12 8LF	80	25/09/2019		
65	01985219607	PCO PCO1 THORNHILL ROAD WARMINSTER	BA12 8EF	7	25/09/2019		
66	01985219906	PCO PCO1 BOREHAM ROAD WARMINSTER	BA12 9JW	3	25/09/2019		
67	01985840261	PCO PCO1 HIGH STREET HEYTESBURY WARMINSTER	BA12 0EA	10	25/09/2019		
68	01985844416	PCO PCO1 KINGSTON DEVERILL WARMINSTER	BA12 7HE	4	25/09/2019		
69	01985846670	PCO PCO1 VICTORIA ROAD WARMINSTER	BA12 8HF	0	25/09/2019		
70	01985850242	PCO PCO1 STOCKTON WARMINSTER	BA12 0SE	2	25/09/2019		

	Telephone Number	Address	Post Code	Number of calls in last 12 months	Posting Completed Date	Agree/ Adopt/ Object	Comments/Reasons
71	01985850309	PCO PCO1 HIGH STREET CODFORD WARMINSTER	BA12 0NB	2	25/09/2019		

Page 54

Signature:
Area: Wiltshire

Chairman's Announcements

Subject:	Flood Resilience in Your Local Area
Web contact:	renate.malton@wiltshire.gov.uk

The recent wet weather may lead to communities asking about their flood risk.

Communities may be interested in holding a workshop to enable any towns and parishes within your area the opportunity to sit down and work through drafting up a flood plan for their community along with a colleague from the Environment Agency. Drawing up a flood plan can be daunting for a parish on its own but doing this with other like-minded parishes will help.

Communities can find out if they are at risk of flooding through the attached environment agency link: <https://www.gov.uk/check-flood-risk>

We would be looking to do this from January 2020. The best days to arrange these are Tuesdays & Wednesday – am/pm and evenings.

For more information please contact Renate Malton, Flood Resilience Officer renate.malton@wiltshire.gov.uk

This page is intentionally left blank

Report to		Trowbridge Area Board		
Date of Meeting		09/01/2020		
Title of Report		Community Area Grant funding		
Provisional Figures	Area Board Grants Budget	H&WB Fund	LYN Fund	CATG
Opening balance 2019/20	£71,933.00	£7,700.00	£32,540.00	
Grant Applications Awarded to date	£39,068.00	£4,900.00	£19,746.00	-
Current Balance	£33,148.00	£2,975.00	£12,794.00	
Balance if all grants are agreed at this meeting	£7,472.20	£2,975.15	-£1,326.00	N/A

Purpose of the report:

To consider the applications for funding listed below

Applicant	Amount requested
Applicant: Trowbridge Sports Forum Project Title: Longfield Muga Enhancement View full application	£20000.00
Applicant: HELP Counselling Services Project Title: Expansion of the Service View full application	£660.00
Applicant: Trowbridge Town Football Club Project Title: Woodmarsh	£4030.00

View full application	
Applicant: Richmond Fellowship Project Title: The Wiltshire Hearing Voices Group View full application	£985.80

1. Background

Area Boards have authority to approve Area Grants under powers delegated to them. Under the Scheme of Delegation Area Boards must adhere to the [Area Board Grants Guidance](#)

[The funding criteria and application forms](#) are available on the council's website.

2. Main Considerations

2.1. Councillors will need to be satisfied that funding awarded in the 2015/2016 year is made to projects that can realistically proceed within a year of it being awarded.

2.2. Councillors must ensure that the distribution of funding is in accordance with the Scheme of Delegation to Area Boards.

2.3. Councillors will need to be satisfied that the applications meet the Community Area Board grants criteria.

3. Environmental & Community Implications

Grant Funding will contribute to the continuance and/or improvement of cultural, social and community activity and wellbeing in the community area, the extent of which will be dependent upon the individual project.

4. Financial Implications

Financial provision had been made to cover this expenditure.

5. Legal Implications

There are no specific legal implications related to this report.

6. Human Resources Implications

There are no specific human resources implications related to this report.

7. Equality and Inclusion Implications

Community Area Boards must fully consider the equality impacts of their decisions in order to meet the Council's Public Sector Equality Duty.

Community Area Grants will give local community and voluntary groups, Town and Parish Council's equal opportunity to receive funding towards community based projects and schemes, where they meet the funding criteria.

8. Safeguarding Implications

The Area Board has ensured that the necessary policies and procedures are in place to safeguard children, young people and vulnerable adults.

9. Applications for consideration

Application ID	Applicant	Project Proposal	Requested
3478	Trowbridge Sports Forum	Longfield Muga Enhancement	£20000.00
<p>Project Description: Trowbridge Town Council obtained 4 multi-sport sites in separate housing estates across Trowbridge as an asset transfer from Wiltshire Council. The sites have lacked maintenance for some time prior to the transfer and as a result have become over time under used and a target for vandalism. The site at Grove has not had any investment in over a decade and has poor access for less able members of the community. The sites at Longfield Seymour and Studley Green are all located in areas of social and economic deprivation. The latter being in the top 10 nationally. The existing goal ends on 2 of the 4 sites are plywood 2 of the courts have been burned and 1 is gravel chippings unsuitable for play. Fencing on 2 of the sites are insufficient and the other 2 lack any kind of fencing at all. Investing in these multi-sport court facilities will make a massive contribution to the local communities creating a community hub for sports and recreation. We would like to completely renovate each site with new goal ends new fencing resurfacing courts where required line painting and provide improved access to sites where necessary. The Chair of TCAF Trowbridge Community Area Future which is a small local youth and community charity in Trowbridge believes that redeveloping these MUGAs will have a direct positive impact on the young people and residents we work with and ensure they have an increased value for their community and the local environment where they live.</p> <p>Input from Community Engagement Manager: (CEM put your input here)</p> <p>Proposal That the Area Board determines the application.</p>			

Application ID	Applicant	Project Proposal	Requested
3494	HELP Counselling Services	Expansion of the Service	£660.00
<p>Project Description: To increase the number of clients we are able to see and provide support outside of the counselling room with an improved website</p> <p>Input from Community Engagement Manager: (CEM put your input here)</p> <p>Proposal That the Area Board determines the application.</p>			

Application ID	Applicant	Project Proposal	Requested
----------------	-----------	------------------	-----------

3470	Trowbridge Town Football Club	Woodmarsh	£4030.00
<p>Project Description: Ongoing improvements at Woodmarsh the home of TTFC for both adults and youths. 450 players are affiliated to the club in this current season. Significant work has already been undertaken following the F A Pitch Improvement Programme document. Over 10K has been committed to date some of which was previously funded via an Area Board grant. The work has been fantastic leading to greatly increased use less weather dependant. We want to continue onto the next phase as recommended in the F A document.</p> <p>Input from Community Engagement Manager: (CEM put your input here)</p>			
<p>Proposal That the Area Board determines the application.</p>			

Application ID	Applicant	Project Proposal	Requested
3508	Richmond Fellowship	The Wiltshire Hearing Voices Group	£985.80
<p>Project Description: The group has been running for 3 years providing a safe and non-judgmental place for people with unusual sensory experiences to come together to share experiences and coping strategies. It is a chance to think outside of labels and to move beyond diagnosis. Sharing is vital since voice hearers are some of the most stigmatised and socially isolated people in society. Many do not even share their experiences with their partners or closest friends family. The group is facilitated by a staff member and a volunteer and is part of the Hearing Voices Network the national charity for voice hearers.</p> <p>Input from Community Engagement Manager: (CEM put your input here)</p>			
<p>Proposal That the Area Board determines the application.</p>			

No unpublished documents have been relied upon in the preparation of this report

Report Author:

Liam Cripps
Community Engagement Manager
01225 713143
Liam.Cripps@wiltshire.gov.uk

Report to	Trowbridge
Date of Meeting	09/01/2020
Title of Report	Community Youth Grants

1. Purpose of the report:

To ask Councillors to consider the following applications seeking funding from the Trowbridge Area Board.

Application	Grant Amount	
Applicant: Wiltshire YFC Project Title: Wiltshire YFC 2020 Trowbridge Summer Pop Up Event	£3000.00	
Applicant: Trowbridge Community Area Future Project Title: Trowbridge Future	£5000.00	
Applicant: Young Melksham Project Title: No Limits SEND Youth Club	£1500.00	
Applicant: Wiltshire Council Project Title: Trowbridge Club 1 Free Gym Referral Programme	£4800.00	
Total grant amount requested at this meeting	£14,300.00	
Total amount allocated so far	£25,046.00	

2. Main Considerations

Councillors will need to be satisfied that grants awarded in the 2019/2020 year are made to projects that can realistically proceed within a year of the award being made.

Area Boards have authority to approve Area Grants under powers delegated to them by the Cabinet member for Communities, Campuses, Area Boards, Leisure, Libraries and Flooding. Under the Scheme of Delegation Area Boards must adhere to the Area Board Grants Guidance 2019/2020.

Community Youth Grants will contribute to the continuance and/or improvement of cultural, social and community activity and wellbeing in the community area, the extent and specifics of which will be dependent upon the individual project.

Community Youth Grants give all local community and voluntary groups, Town and Parish Councils an equal opportunity to receive funding towards community based projects and schemes.

3. The applications

<p>Applicant: Wiltshire YFC Project Title: Wiltshire YFC 2020 Trowbridge Summer Pop Up Event</p>	<p>Amount Requested from Area Board: £3000.00</p>	
<p>This application meets grant criteria 2014/15.</p> <p>Project Summary: Providing a Safe and active venue for youth engagement using a unique Mobile resource van and youth worker support. Wiltshire YFC Trowbridge Summer 2020 Pop Up Youth Cafe working with detached young people and using resources and youth workers to encourage and support teenagers. The activities are open and free to all but often connects with those who are NEET or at risk of exclusion. The event also takes place during the summer break when groups gather together and more at risk of anti-social behaviour.</p>		
<p>Applicant: Trowbridge Community Area Future Project Title: Trowbridge Future</p>	<p>Amount Requested from Area Board: £5000.00</p>	
<p>This application meets grant criteria 2014/15.</p> <p>Project Summary: TCAF are re-branding their organisation to become Trowbridge Future. We are looking to employ four youth support workers to engage local young people often marginalised within the local community to participate in marketing and social action projects to feel more positive about their town and celebrate what makes Trowbridge special.</p>		
<p>Applicant: Young Melksham Project Title: No Limits SEND Youth Club</p>	<p>Amount Requested from Area Board: £1500.00</p>	
<p>This application meets grant criteria 2014/15.</p> <p>Project Summary: The No Limits youth club is a dedicated recreational and social space for young people with special educational needs or</p>		

disabilities. Its held every Monday night at the Canberra Centre in Melksham. Any young person between the ages of 13 and 25 can attend and take part in a range of activities supported by a team of experienced youth workers and volunteers.

Applicant: Wiltshire Council Project Title: Trowbridge Club 1 Free Gym Refferal Programme	Amount Requested from Area Board: £4800.00	
--	---	--

This application meets grant criteria 2014/15.

Project Summary: Note This application is submitted from Wiltshire Councils Sports Development Service. Any grant awarded will not fund core service delivery. Funds awarded will be managed by the service to provide extra opportunity for young people in the community with no charge and 100 of the money will go to gym memberships for venerable young people within the Trowbridge community. The service will act as the manager of funds of which community referral agencies will apply into for young people including homeless shelters Motiv8 MENCAP etc. Therefore this would be a community-need project delivered in partnership with referral agencies working with local young people on the ground and the Sports Development service will manage the referrals and take up of the free gym memberships offering help advice or support this aspect will all be in kind. Aims Engage young people into positive solo activities specifically focusing on those who face barriers such as mental health poverty and other forms of exclusion. To meet the needs of groups of young people at greater risk of negative outcomes and whose engagement is often limited. To have a positive impact upon the long-term health of the venerable young people of Trowbridge through developing a culture of sustained physical activity participation. To work with young people/families who do not participate in sport currently who live in areas of high deprivation. Wiltshire Council Business Plan 2017-2027 Priorities and Goals. Strong Communities Personal Wellbeing. Protecting the vulnerable Early intervention. Working with partners Delivering together.

Report Author:
 Liam Cripps, Trowbridge Area Board
 01225 713000

This page is intentionally left blank

Grant Applications for Trowbridge on 09/01/2020

ID	Grant Type	Project Title	Applicant	Amount Required
3478	Area Board Initiative	Longfield Muga Enhancement	Trowbridge Sports Forum	£20000.00
3494	Community Area Grant	Expansion of the Service	HELP Counselling Services	£660.00
3470	Community Area Grant	Woodmarsh	Trowbridge Town Football Club	£4030.00
3508	Health and Wellbeing Grant	The Wiltshire Hearing Voices Group	Richmond Fellowship	£985.80

ID	Grant Type	Project Title	Applicant	Amount Required
3478	Area Board Initiative	Longfield Muga Enhancement	Trowbridge Sports Forum	£20000.00

Submitted: 10/10/2019 13:51:42

ID: 3478

Current Status: Application Appraisal

To be considered at this meeting:

tbc contact Community Area Manager

1. Which type of grant are you applying for?

Area Board Initiative

2. Amount of funding required?

£5001+

3. Are you applying on behalf of a Parish Council?

Yes

4. If yes, please state why this project cannot be funded from the Parish Precept

Trowbridge Town Council already charges more than another in our community area and all of our additional funding for 2020 2021 will be allocated to undertaking the responsibility fo Wiltshire Council.

5. Project title?

Longfield Muga Enhancement

6. Project summary:

Trowbridge Town Council obtained 4 multi-sport sites in separate housing estates across Trowbridge as an asset transfer from Wiltshire Council. The sites have lacked maintenance for some time prior to the transfer and as a result have become over time under used and a target for vandalism. The site at Grove has not had any investment in over a decade and has poor access for less able members of the community. The sites at Longfield Seymour and Studley Green are all located in areas of social and economic deprivation. The latter being in the top 10 nationally. The existing goal ends on 2 of the 4 sites are plywood 2 of the courts have been burned and 1 is gravel chippings unsuitable for play. Fencing on 2 of the sites are insufficient and the other 2 lack any kind of fencing at all. Investing in these multi-sport court facilities will make a massive contribution to the local communities creating a community hub for sports and recreation. We would like to completely renovate each site with new goal ends new fencing resurfacing courts where required line painting and provide improved access to sites where necessary. The Chair of TCAF Trowbridge Community Area Future which is a small local youth and community charity in Trowbridge believes that redeveloping these MUGAs will have a direct positive impact on the young people and residents we work with and ensure they have an increased value for their community and the local environment where they live.

7. Which Area Board are you applying to?

Trowbridge

Electoral Division

8. What is the Post Code of where the project is taking place?

BA14 7HE

9. Please tell us which theme(s) your project supports:

Children & Young People

Health and wellbeing

Leisure and Culture

Older People

Our Community

Safer communities

If Other (please specify)

10. Finance:

10a. Your Organisation's Finance:

Your latest accounts:

06/2019

Total Income:

£275602.00

Total Expenditure:

£731937.00

Surplus/Deficit for the year:

£35023.00

Free reserves currently held:

(money not committed to other projects/operating costs)

£99273.18

Why can't you fund this project from your reserves:

The reserves are allocated

We are a small community group and do not have annual accounts or it is our first year:

10b. Project Finance:

Total Project cost		£146917.00		
Total required from Area Board		£20000.00		
Expenditure (Itemised expenditure)	£	Income (Itemised income)	Tick if income confirmed	£
Seymour	2586375.00	Sport England		92000.00
Longfield	4519330.00			
Studley	4521900.00			
Grove	30640.94			
Total	£11658245.94			£92000

11. Have you or do you intend to apply for a grant from another area board within this financial year?

No

12. If so, which Area Boards?

Trowbridge

13. Please tell us WHO will benefit and HOW they will benefit from your project benefit your local community?

Investment in these multi-sport courts will draw them once more into their community. They can become a focal point for leisure and affordable sport in the community and

support existing programmes with a renewed resource and opportunities to development. The site at Studley Green for example redevelopment here would give investment to an area of the community that is in the top 10 nationally for social and economic deprivation in the UK. It could be utilised by Trowbridge Wanderers Football Club who play at Studley Green and foster the development of grass roots football. It would also give the National Street Games Doorstep programme a dedicated outside space to use. This is a view supported by Danny Gleeson Sports Development Officer Wiltshire Council will support and work in partnership with Active Trowbridge Trowbridge Town Council through our Street Games This Girl Can and Disability Sports programmes ensuring that new facilities are put to good use. The site at Longfield is central placed again in one of Trowbridges areas of economic deprivation and is key multi faith community. Investment in this site would benefit the local primary school situated right next to the MUGA it would benefit the youth group and the new formed This Girl Can programme which operate out of Longfield Community Centre. We can also ensure that the site is disability inclusive for Stepping Stones a specialist centre located at Longfield. The work to the site at Seymour can be finalised and could again be utilised by the Seymour youth group for sport and along site the grass pitches at this site could offer a great opportunity for the development of club sport. The head of Bellefield Primary serving the Seymour Rd area describes these multi-sport courts as vital. They give young people a different focus than they might otherwise have had if there were no or substandard sports amenities the Seymour Road residents value their community and this would be an invaluable asset to them as well as to all of the young people who attend my and other schools. The children in the area need a safe high quality provision to encourage them to exercise and to learn how to be part of a wider community. The multi-sport site at The Grove is adjacent to 2 of the other housing estates that have no play or sport facilities investing in this site that has severely lacked investment will help to make it a hub for a wide area of the town. It has close proximity to a local primary and Wiltshire Colleges Trowbridge Campus giving students an accessible space for sport and would like the site at Seymour provide a space for club sport to be developed. As the Head of The Grove Primary School states It is clear that our local sports facilities are in need of repair We need our children to be inspired by their local facilities and encouraged to further their sports participation by feeling pride in their environment.

14. How will you monitor this?

Trowbridge Town Council are already working collaboratively with the local schools in each of the estates all of whom support the intended programme of development as do the resident associations and Trowbridge Community Area Future TCAF. We have the support of the Sports Development team at Wiltshire Council to drive the programme forward. It will have a transformative effect on the local communities creating central hubs for leisure facilities locally and we would seek to ensure they are fully engaged in the decision making progress to ensure the multi-sport courts are designed to best suit the needs of their individual communities. We are already working closely with Selwood Housing Association on the Longfield estate. Our proposal to seek support to redevelopment of the multi-sport court at this site coincided with Selwoods own community and partner consultation which asked residents to comment on what aspects of the estate required work and a re-occurring trend in the data has been improvements to the multi-sport court providing facilities for young people particularly with a focus on basketball and provision of new health and well-being initiatives

15. Safeguarding. Please tell us about how you will protect and safeguard those involved in your project

Trowbridge Town Council has a safeguarding policy all staff have DBS checks and safeguarding training.

16. If your project will continue after the Wiltshire Council funding runs out, how will you continue to fund it?

Once the facilities are enhanced TTC will take over ensuring the facilities are maintained to provide high quality facilities for the future.

17. Is there anything else you think we should know about the project?

The project is part of a wider enhancement of all four hard courts in Trowbridge Sports England have confirmed funding for three but wont fund Longfield. As one of the key areas of deprivation and part of the Healthier communities project i believe its imperative Longfield dont get forgotten

18. DECLARATION

Supporting information - Please confirm that the following documents will be available to inspect upon request:

Quotes:

yes I will make available on request 1 quote for individual project costs over £500 & 2 quotes for project costs over £1000 (Individual project costs are listed in the expenditure section above)

Project/Business Plan:

yes I will make available on request a **project or business plan** (including estimates) for projects where the **total project cost** (as declared in the financial section above) exceeds £50,000 (tick only when total project cost exceeds £50,000).

Accounts:

yes I will make available on request the organisation's **latest accounts**

Constitution:

yes I will make available on request the organisation's Constitution/Terms of Reference etc.

Policies and procedures:

yes I will make available on request the necessary and relevant policies and procedures such as Child Protection, Safeguarding Adults, Public Liability Insurance, Access audit, Health & Safety and Environmental assessments.

Other supporting information (Tick where appropriate, for some project these will not be applicable):

yes I will make available on request evidence of ownership of buildings/land

yes I will make available on request the relevant planning permission for the project.

yes I will make available on request any other form of licence or approval for this project has been received prior to submission of this grant application.

And finally...

yes The information on this form is correct, that any award received will be spent on the activities specified.

3494	Community Area Grant	Expansion of the Service	HELP Counselling Services	£660.00
------	----------------------	--------------------------	---------------------------	---------

Submitted: 18/10/2019 11:26:22

ID: 3494

Current Status: Application Appraisal

To be considered at this meeting:

tbc contact Community Area Manager

1. Which type of grant are you applying for?

Community Area Grant

2. Amount of funding required?

£0 - £500

3. Are you applying on behalf of a Parish Council?

No

4. If yes, please state why this project cannot be funded from the Parish Precept

5. Project title?

Expansion of the Service

6. Project summary:

To increase the number of clients we are able to see and provide support outside of the counselling room with an improved website

7. Which Area Board are you applying to?

Trowbridge

Electoral Division

8. What is the Post Code of where the project is taking place?

BA14 8BE

9. Please tell us which theme(s) your project supports:

Health and wellbeing

Our Community

If Other (please specify)

10. Finance:

10a. Your Organisation's Finance:

Your latest accounts:

05/2018

Total Income:

£48522.00

Total Expenditure:

£44554.00

Surplus/Deficit for the year:

£3967.00

Free reserves currently held:

(money not committed to other projects/operating costs)

£17000.00

Why can't you fund this project from your reserves:

Our reserves policy is needed to weather any dips in funding and maintain continuity. To ensure that all clients many very vulnerable will be able to complete their work with us. In the event that the service is no longer needed we are able to fulfil all our financial obligations. The amount needed is 3 months full running costs the current cost of any potential redundancies and an amount to cover other liabilities such as removal costs. We must be absolutely clear that these reserves have not and will not be built through fundraising. All funds raised for the express use of our clients are used for the aims of the service and our clients. All of our reserves have been raised through renting our space to other organisations and individuals. What is the current reserves fund At present our reserves are 17009 We are working towards reserves of 23000. This is 50 of our total yearly expenditure and will cover all eventualities from funding dips to the closure of the service. Our aim is to slowly increase the fund over the next 3 to 5 years by 1500 to 2000 per year and then every subsequent year by 500 to meet annual cost increases. Whilst we will work diligently to see the success of this plan we must be flexible and meet our funding constraints to fully fund the service first and foremost.

We are a small community group and do not have annual accounts or it is our first year:

10b. Project Finance:

Total Project cost		£9080.00		
Total required from Area Board		£660.00		
Expenditure		Income	Tick if income	
(Itemised	£	(Itemised	confirmed	£
expenditure)		income)		
New Website	660.00	We hope from		660.00
		TAB		

5 New Counsellors	4920.00	Awards for All	4920.00
Mew I.A Counsellor	3500.00	Awards for All/ Zurich Community Trust	3500.00
Total	£9080		£9080

11. Have you or do you intend to apply for a grant from another area board within this financial year?

No

12. If so, which Area Boards?

13. Please tell us WHO will benefit and HOW they will benefit from your project benefit your local community?

Here at HELP Counselling Services we believe that everyone deserves to have the opportunity space to grow change and heal. We are dedicated to serving our communities and providing every client respect and good mental health. Everyone who uses our services can grow their awareness understand their behaviours heal improve their relationships by working with our inspiring counsellors. We give people what they need a space place to grow. Together we help to change lives. Our Clients are at the heart of our progress. In the last few years they asked us to provide counsellors experienced in working with older people to set up group work for those with long term health needs for those with disabilities to work within their homes to offer more sessions to those with complex trauma to build more ties with other local groups to refurbish our premises. We delivered on all their requests the feedback has been fantastic. I have gained confidence self worth happiness I feel like a different person. Earlier in the year we receive another form of feedback. We were shortlisted for The Wiltshire Life Community Group of the Year Award. It was an enormous privilege to be standing together with such amazing charities. We received second place which a huge deal for our small local charity it allowed us to access to different media coverage platforms to share our vision of the benefits that positive mental health brings and the services needed to promote that. We now need to move forward again. HELP Counselling Services needs to grow meet the growing needs of our community with pockets of deprivation in the 10 to 20. With people who are struggling with experiences such as historic childhood adult domestic abuse long-term or life-limiting illnesses bereavement and loss abuse in all its forms and trauma. These issues can have a detrimental and painful effect on lives. The result is often chaotic emotions disruptive relationships addictive behaviours depression self-neglect isolation self-harm low self-esteem. We need to provide hundreds of extra sessions this year to bring our waiting list back down to under 6 weeks we need to provide those sessions throughout the day and into the evening. We will with your support bring on-board 5 new volunteer counsellors 3 of which will be evening counsellors creating 700 new sessions a year. With extra counsellors clients brings extra administration. A new post dedicated to offering initial appointments to incoming clients will be created. This will mean new clients will be seen for a preliminary appointment within 10 days before moving onto the waiting list. The new position will free up the 2

existing staff to continue to manage clients counsellors and the service as a whole. Lastly we need to update our website to make it a important and dynamic resource for our clients. With blogs vlogs from counsellors mental health sufferers useful links to local services and to welcome new clients to the service. This is a much needed expansion In Wiltshire 1 in 5 adults are living in poverty Because of the rural nature of the county residents face deprivation of housing accessible services. One of the fastest growing aging populations in England. Counselling provides a lifeline for many people suffering from a mental health illness. Access to a prompt service can be the difference between recovering well or problems spiralling into crisis. The wider human cost of long waiting times are devastating.

14. How will you monitor this?

All clients are asked to measure 8 key areas of their lives. This is done at the start of counselling at the end. The results below show considerable increases in all aspects of their lives Feelings of Depression Anxiety 40 Self Esteem 27 Physical Health 16 Personal Interests 32 Career or Vocation 46 Personal Relationships 29 Family Relationships 25 Extended Relationships 29 These large improvements over a relatively short 4-month period create a solid base to continue building their personal self-awareness growth. Through this feedback we see that our clients feel more in control of their lives become more active healthy engaged. We also ask our clients for anonymous written feedback on the service they received. One client wrote All I can say is it that it was EXCELLENT. You provided everything I needed to feel better

15. Safeguarding. Please tell us about how you will protect and safeguard those involved in your project

All Counsellors Staff are DBSed as well as providing safeguarding training to all upon entering the service. We have an up to date Vulnerable Persons and Safeguarding Policy. Volunteers are expected to provide us evidence that they are DBSed.

16. If your project will continue after the Wiltshire Council funding runs out, how will you continue to fund it?

The website will be taken care of at a cost of 150 per year. This is already a current expense and will continue to be in the future.

17. Is there anything else you think we should know about the project?

It is part of our expansion and will cost 9080

18. DECLARATION

Supporting information - Please confirm that the following documents will be available to inspect upon request:

Quotes:

yes I will make available on request 1 quote for individual project costs over £500 & 2 quotes for project costs over £1000 (Individual project costs are listed in the expenditure section above)

Accounts:

yes I will make available on request the organisation's **latest accounts**

Constitution:

yes I will make available on request the organisation's Constitution/Terms of Reference etc.

Policies and procedures:

yes I will make available on request the necessary and relevant policies and procedures such as Child Protection, Safeguarding Adults, Public Liability Insurance, Access audit, Health & Safety and Environmental assessments.

Other supporting information (Tick where appropriate, for some project these will not be applicable):**And finally...**

yes The information on this form is correct, that any award received will be spent on the activities specified.

3470	Community Area Grant	Woodmarsh	Trowbridge Town Football Club	£4030.00
------	----------------------	-----------	-------------------------------	----------

Submitted: 07/10/2019 14:54:07

ID: 3470

Current Status: Application Appraisal

To be considered at this meeting:

tbc contact Community Area Manager

1. Which type of grant are you applying for?

Community Area Grant

2. Amount of funding required?

£501 - £5000

3. Are you applying on behalf of a Parish Council?

No

4. If yes, please state why this project cannot be funded from the Parish Precept**5. Project title?**

Woodmarsh

6. Project summary:

Ongoing improvements at Woodmarsh the home of TTFC for both adults and youths. 450 players are affiliated to the club in this current season. Significant work has already been undertaken following the F A Pitch Improvement Programme document. Over 10K has been committed to date some of which was previously funded via an Area Board grant. The work has been fantastic leading to greatly increased use less weather dependant. We want to continue onto the next phase as recommended in the F A document.

7. Which Area Board are you applying to?

Trowbridge

Electoral Division

8. What is the Post Code of where the project is taking place?

BA140AZ

9. Please tell us which theme(s) your project supports:

Children & Young People

Health and wellbeing

Leisure and Culture

Our Community

If Other (please specify)

10. Finance:

10a. Your Organisation's Finance:

Your latest accounts:

05/2019

Total Income:

£46759.00

Total Expenditure:

£58627.00

Surplus/Deficit for the year:

£-11868.00

Free reserves currently held:

(money not committed to other projects/operating costs)

£4000.00

Why can't you fund this project from your reserves:

Reserves will be used to part fund together with additional fundraising. Reserves are needed for day to day cash flow due to the deficit of income v expenditure.

We are a small community group and do not have annual accounts or it is our first year:

10b. Project Finance:

Total Project cost £8060.00

Total required from Area Board £4030.00

Expenditure		Income	
(Itemised	£	(Itemised	Tick if income
expenditure)		income)	confirmed
			£

Verti Draining machine	2600.00		
Pitch Improvements	5460.00	Our reserves & fundraising	4030.00
Total	£8060		£4030

11. Have you or do you intend to apply for a grant from another area board within this financial year?

No

12. If so, which Area Boards?

Trowbridge

13. Please tell us WHO will benefit and HOW they will benefit from your project benefit your local community?

All players of the club. Woodmarsh is used for all summer training from U5s through to adult teams both male and female. In addition the pitches support weekend matches for U7s U8s U9s U10s U11s and for the first time U12s who share the pitch with the U11s as the pitch quality and durability has improved so much following previous work undertaken. The U16s adults male adults reserves and adults females also play on the main pitch. Only 3 age groups play away from Woodmarsh purely due to pitch sizes and it is hoped that further work on the whole area will allow them to play at this main site in due course. The ongoing work will ensure better drainage less match cancellations and more playing time for both male and female players. Ultimately more funds retained within the club as no hire fees are paid to external venues. We want to do everything we can to ensure games happen and there is no disappointment or cancellations on the day of or just before the scheduled match time. The players benefit from fitness playing together as a team fresh air activity and clearly have fun. It also brings pleasure to many parents and grand parents who turn up to watch the youth especially play. The additional funding will allow more improvements to continue as per the F A stated schedule and timeline - more verti draining more fertilising improve the grass coverage and continue the great work to date undertaken by our groundsman specialist service providers such as Eco Solve - who maintain the pitches at Trowbridge Rugby Club and the volunteer support the club gets.

14. How will you monitor this?

Via the Treasurer and groundsman funds will be placed in a separate internal account and payments only permitted against the agreed schedule of expenditure linked to the F A Improvement Programme. The site improvements will be visible to be seen from the work undertaken and improved playing surfaces less cancellations or postponements and more training sessions returning to Woodmarsh. Ultimately more age groups playing there. The verti drainer machine itself will be purchased stored at Woodmarsh.

15. Safeguarding. Please tell us about how you will protect and safeguard those involved in your project

We follow the F A Safeguarding Respect guidelines. All managers and coaches are DBS checked and maintained. Each manager has to complete the F A Safeguarding course on a 3

year basis. We have the necessary policies in place under the oversight of a Safeguarding Officer Karen McCaldon. 2 additional volunteers will be attending the F A Welfare Officer course in January - Devizes to ensure cover is in place for a club of our size. Spot inspections and checking of documents knowledge is undertaken by Wilts FA during the season.

16. If your project will continue after the Wiltshire Council funding runs out, how will you continue to fund it?

Ongoing fund raising and other grant applications. Project is ongoing but in stages so each stage can be undertaken independently subject to the necessary funds in place. A stage will not be commenced unless the required funds are held to see it through to completion.

17. Is there anything else you think we should know about the project?

NA

18. DECLARATION

Supporting information - Please confirm that the following documents will be available to inspect upon request:

Quotes:

yes I will make available on request 1 quote for individual project costs over £500 & 2 quotes for project costs over £1000 (Individual project costs are listed in the expenditure section above)

Accounts:

yes I will make available on request the organisation's **latest accounts**

Constitution:

yes I will make available on request the organisation's Constitution/Terms of Reference etc.

Policies and procedures:

yes I will make available on request the necessary and relevant policies and procedures such as Child Protection, Safeguarding Adults, Public Liability Insurance, Access audit, Health & Safety and Environmental assessments.

Other supporting information (Tick where appropriate, for some project these will not be applicable):

And finally...

yes The information on this form is correct, that any award received will be spent on the activities specified.

3508	Health and Wellbeing Grant	The Wiltshire Hearing Voices Group	Richmond Fellowship	£985.80
------	----------------------------	------------------------------------	---------------------	---------

Submitted: 29/10/2019 12:40:20

ID: 3508

Current Status: Application Appraisal

To be considered at this meeting:

tbc contact Community Area Manager

1. Which type of grant are you applying for?

Health and Wellbeing Grant

2. Amount of funding required?

£0 - £500

3. Are you applying on behalf of a Parish Council?

No

4. If yes, please state why this project cannot be funded from the Parish Precept

5. Project title?

The Wiltshire Hearing Voices Group

6. Project summary:

The group has been running for 3 years providing a safe and non-judgmental place for people with unusual sensory experiences to come together to share experiences and coping strategies. It is a chance to think outside of labels and to move beyond diagnosis. Sharing is vital since voice hearers are some of the most stigmatised and socially isolated people in society. Many do not even share their experiences with their partners or closest friends family. The group is facilitated by a staff member and a volunteer and is part of the Hearing Voices Network the national charity for voice hearers.

7. Which Area Board are you applying to?

Trowbridge

Electoral Division

8. What is the Post Code of where the project is taking place?

BA14 7AQ

9. Please tell us which theme(s) your project supports:

Health and wellbeing

Our Community

Safer communities

If Other (please specify)

10. Finance:

10a. Your Organisation's Finance:

Your latest accounts:

03/2019

Total Income:

£421072.00

Total Expenditure:

£462859.00

Surplus/Deficit for the year:

£-41787.00

Free reserves currently held:**(money not committed to other projects/operating costs)**

£0.00

Why can't you fund this project from your reserves:

We are funded through contracts from the NHS and also Wiltshire Council to provide a specific range of services. The Wiltshire Hearing Voices Group is outside the scope of these contracts. We know that there is a real need for this group as it is a lifeline for many of its members. We are therefore keen to seek funding to ensure that it continues especially as it is the only group of its kind in Wiltshire.

We are a small community group and do not have annual accounts or it is our first year:

10b. Project Finance:

Total Project cost		£2082.00		
Total required from Area Board		£985.80		
Expenditure (Itemised expenditure)	£	Income (Itemised income)	Tick if income confirmed	£
Cost for one member of staff 2 x 2.5 hour Hearing Voices Groups delivered monthly	607.80	Venue IN KIND 2 x 2.5 hour sessions monthly provided by Tesco Extra Trowbridge @ 10 ph	yes	600.00
Travel expenses for a paid staff member and a volunteer from SN10 1XA to BA14 7AQ	378.00	Tea coffee biscuits etc IN KIND provided by Tesco @ £4 per session for 24 sessions	yes	96.00

Venue IN KIND 2 x 2.5 hour sessions monthly provided by Tesco Extra Trowbridge @ 10 ph	600.00	Volunteer IN KIND 2 x 2.5 hour sessions monthly @ 6.67 per hour	yes	400.20
Tea coffee biscuits etc IN KIND provided by Tesco @ 4 per session for 24 sessions	96.00			
Volunteer IN KIND 2 x 2.5 hour sessions monthly @ 6.67 per hour	400.20			
Total	£2082			£1096.2

11. Have you or do you intend to apply for a grant from another area board within this financial year?

No

12. If so, which Area Boards?

Trowbridge

13. Please tell us WHO will benefit and HOW they will benefit from your project benefit your local community?

The group is open to anyone who lives with unusual sensory experiences e.g. visual disturbances and voices. In the last 12 months 19 voice hearers have completed referral forms and have attended the group. Many individuals attend every session because it is so important to maintaining their mental health. Family members students and health care professionals have also attended to gain insight into voice hearing. We have been approached by Oxford University to take part in a study about how forming relationships with other voice hearers can improve health and wellbeing. Voice hearers are some of the most socially excluded members of society. Stigma distress medication social isolation unemployment addiction loneliness and suicidal ideation make life a challenge. A World Psychiatry 2014 study found such factors reduce life expectancy for voice hearers by as much as 20 years. Having a group where participants can discuss experiences share coping strategies and meet and make friends with other sufferers is therefore imperative. This is evidenced in the written feedback from the members. It made me realise that I am not the only person struggling and that made a massive difference to my outlook. I get the feeling that when people come together with good intentions then good deep healing can occur. Stigma means many members do not talk to ANYONE about their experiences outside of the group. Individuals are encouraged to think outside of labels to come to their own

understanding of their voices. This helps to normalise and validate peoples experiences and to show that it is possible to lead a meaningful and fulfilling life as a voice hearer. There is also a strong emphasis on co-production peer support inclusivity and empowerment. Volunteers with lived experience support the sessions and show that it is possible to make meaningful contributions to society whilst also showing the levels of empathy that only a suffer could demonstrate. The group strongly links with the Trowbridge Local Priorities e.g. 63 identified mental health and 46 as health inequalities as priorities. Similarly 93 identified alcohol and drug abuse as a priority often an issue for voice hearers as they try to self-medicate. The group will also allow help fulfill the Business Plan goals e.g. personal wellbeing and early intervention goals.

14. How will you monitor this?

New members are asked to complete a basic referral form. This asks for information such as their name address contact details and emergency contact details. We keep attendance records for each session. If someone hasnt been for a couple of weeks who is a regular attender we contact them to check on their wellbeing. We complete a quarterly report of numbers attending the group. We seek verbal and written feedback from those attending and from those who leave the group. We use this to inform how the group is run.

15. Safeguarding. Please tell us about how you will protect and safeguard those involved in your project

Richmond Fellowship have polices and procedures in place regarding the safeguarding of vulnerable adults and children which all staff are familiar with. Staff are familiar with the local safeguarding arrangements and who to contact at Wiltshire Council should they have any Safeguarding concerns. All staff and volunteers are DBS checked on before commencing their role and this is reviewed every 3 years. When a person joins the group they will be provided with a welcome letter outlining safeguarding procedures. We also include out of hours contacts should people require support for their mental health away from their usual routine e.g. GP CPN Samaritans SANeline. All those attending the group will be asked to complete an emergency contact form and identify next of kin details who we can contact if necessary. Having volunteers at the group means that there is never an issue with lone working for the RF staff member.

16. If your project will continue after the Wiltshire Council funding runs out, how will you continue to fund it?

We will put in bids to other organisations. These could include the Greggs Foundation Tesco Bags of Help Healthwatch Wiltshire and the Rotary Club. This year the group was funded by Santander. We will also fund raise to make money to support the continuation of the group.

17. Is there anything else you think we should know about the project?

NA

18. DECLARATION

Supporting information - Please confirm that the following documents will be available to inspect upon request:

Quotes:

yes I will make available on request 1 quote for individual project costs over £500 & 2

quotes for project costs over £1000 (Individual project costs are listed in the expenditure section above)

Accounts:

yes I will make available on request the organisation's **latest accounts**

Constitution:

yes I will make available on request the organisation's Constitution/Terms of Reference etc.

Policies and procedures:

yes I will make available on request the necessary and relevant policies and procedures such as Child Protection, Safeguarding Adults, Public Liability Insurance, Access audit, Health & Safety and Environmental assessments.

Other supporting information (Tick where appropriate, for some project these will not be applicable):

And finally...

yes The information on this form is correct, that any award received will be spent on the activities specified.

Grant Applications for Trowbridge on 09/01/2020

ID	Grant Type	Project Title	Applicant	Amount Required
----	------------	---------------	-----------	-----------------

ID	Grant Type	Project Title	Applicant	Amount Required
780	Youth	Wiltshire YFC 2020 Trowbridge Summer Pop Up Event	Wiltshire YFC	£3000.00

Submitted: 10/12/2019 11:36:40

ID: 780

Current Status: Application Appraisal

To be considered at this meeting:

tbc contact Community Area Manager

1. Which type of grant are you applying for?

Youth

2. Amount of funding required?

£501 - £5000

3. Are you applying on behalf of a Parish Council?

parish_council PLACE HOLDER

4. If yes, please state why this project cannot be funded from the Parish Precept

parish_precept PLACE HOLDER

5. Project title?

Wiltshire YFC 2020 Trowbridge Summer Pop Up Event

6. Project summary:

Providing a Safe and active venue for youth engagement using a unique Mobile resource van and youth worker support. Wiltshire YFC Trowbridge Summer 2020 Pop Up Youth Cafe working with detached young people and using resources and youth workers to encourage and support teenagers. The activities are open and free to all but often connects

with those who are NEET or at risk of exclusion. The event also takes place during the summer break when groups gather together and more at risk of anti-social behaviour.

7. Which Area Board are you applying to?

Trowbridge

Electoral Division

8. What is the Post Code of where the project is taking place?

BA14 9AG

9. Please tell us which theme(s) your project supports:

Informal education

Youth work/development

Sport/Leisure

1:1/group work

Community Project

Community Safety

Volunteering

Environment

Health

If Other (please specify)

10. Finance:

10a. Your Organisation's Finance:

Your latest accounts:

08/2019

Total Income:

£52558.00

Total Expenditure:

£73094.00

Surplus/Deficit for the year:

£20536.00

Free reserves currently held:

(money not committed to other projects/operating costs)

£0.00

Why can't you fund this project from your reserves:

Why cant you fund this project from your reserves This figure Surplus is actually is covered by our Bath YFC parent charity who subsidise the Wiltshire work. The reserves are in place

as good practice for ongoing running costs and work. This applications covers the costs incurred from this specific project

We are a small community group and do not have annual accounts or it is our first year:

10b. Project Finance:

Total Project cost		£3000.00		
Total required from Area Board		£3000.00		
Expenditure (Itemised expenditure)	£	Income (Itemised income)	Tick if income confirmed	£
Youth Workers	1500.00			
Refreshments	150.00			
Insurance	50.00			
Administration	300.00			
Sports/Activities	750.00			
Van Resource	250.00			
Total	£3000			£0

11. Have you or do you intend to apply for a grant from another area board within this financial year?

No

12. If so, which Area Boards?

Trowbridge

13. Please tell us WHO will benefit and HOW they will benefit from your project benefit your local community?

project_beneficiary PLACE HOLDER

14. How will you monitor this?

project_monitor PLACE HOLDER

15. If your project will continue after the Wiltshire Council funding runs out, how will you continue to fund it?

project_future PLACE HOLDER

16. Is there anything else you think we should know about the project?

project_additional PLACE HOLDER

17. DECLARATION

Supporting information - Please confirm that the following documents will be available to inspect upon request:

Quotes:

over1k_disp PLACE HOLDER I will make available on request 1 quote for individual project costs over £500 & 2 quotes for project costs over £1000 (Individual project costs are listed in the expenditure section above)

Other supporting information (Tick where appropriate, for some project these will not be applicable):

And finally...

yes The information on this form is correct, that any award received will be spent on the activities specified.

744	Youth	Trowbridge Future	Trowbridge Community Area Future	£5000.00
-----	-------	-------------------	----------------------------------	----------

Submitted: 11/10/2019 17:08:58

ID: 744

Current Status: Application Appraisal

To be considered at this meeting:

tbc contact Community Area Manager

1. Which type of grant are you applying for?

Youth

2. Amount of funding required?

£501 - £5000

3. Are you applying on behalf of a Parish Council?

parish_council PLACE HOLDER

4. If yes, please state why this project cannot be funded from the Parish Precept

parish_precept PLACE HOLDER

5. Project title?

Trowbridge Future

6. Project summary:

TCAF are re-branding their organisation to become Trowbridge Future. We are looking to employ four youth support workers to engage local young people often marginalised within the local community to participate in marketing and social action projects to feel more positive about their town and celebrate what makes Trowbridge special.

7. Which Area Board are you applying to?

Trowbridge

Electoral Division

8. What is the Post Code of where the project is taking place?

BA14 8AH

9. Please tell us which theme(s) your project supports:

Informal education

Youth work/development

Health

If Other (please specify)

10. Finance:

10a. Your Organisation's Finance:

Your latest accounts:

03/2019

Total Income:

£48467.00

Total Expenditure:

£53979.00

Surplus/Deficit for the year:

£19952.00

Free reserves currently held:

(money not committed to other projects/operating costs)

£19952.00

Why can't you fund this project from your reserves:

is a small local charity that operates with small reserves with all its funds supporting direct project delivery to benefit the local community. The free reserves from 2017/18 are set aside to cover staff salaries consumables and equipment to support our ongoing core activities which we need to find additional funding to extend our work.

We are a small community group and do not have annual accounts or it is our first year:

10b. Project Finance:

Total Project cost £8900.00

Total required from Area Board £5000.00

Expenditure (Itemised expenditure)	£	Income (Itemised income)	Tick if income confirmed	£
Sessional Youth Workers	5200.00	Youth Apprentice National Lottery Grant	yes	2100.00
		Senior Youth Worker OPPC Grant	yes	1600.00
Total	£5200			£3700

11. Have you or do you intend to apply for a grant from another area board within this financial year?

No

12. If so, which Area Boards?

Trowbridge

13. Please tell us WHO will benefit and HOW they will benefit from your project benefit your local community?

project_beneficiary PLACE HOLDER

14. How will you monitor this?

project_monitor PLACE HOLDER

15. If your project will continue after the Wiltshire Council funding runs out, how will you continue to fund it?

project_future PLACE HOLDER

16. Is there anything else you think we should know about the project?

project_additional PLACE HOLDER

17. DECLARATION

Supporting information - Please confirm that the following documents will be available to inspect upon request:

Quotes:

over1k_disp PLACE HOLDER I will make available on request 1 quote for individual project costs over £500 & 2 quotes for project costs over £1000 (Individual project costs are listed in the expenditure section above)

Other supporting information (Tick where appropriate, for some project these will not be applicable):

And finally...

yes The information on this form is correct, that any award received will be spent on the activities specified.

759	Youth	No Limits SEND Youth Club	Young Melksham	£1500.00
-----	-------	---------------------------	----------------	----------

Submitted: 17/11/2019 21:17:33

ID: 759

Current Status: Application Appraisal

To be considered at this meeting:

tbc contact Community Area Manager

1. Which type of grant are you applying for?

Youth

2. Amount of funding required?

£501 - £5000

3. Are you applying on behalf of a Parish Council?

parish_council PLACE HOLDER

4. If yes, please state why this project cannot be funded from the Parish Precept

parish_precept PLACE HOLDER

5. Project title?

No Limits SEND Youth Club

6. Project summary:

The No Limits youth club is a dedicated recreational and social space for young people with special educational needs or disabilities. Its held every Monday night at the Canberra Centre in Melksham. Any young person between the ages of 13 and 25 can attend and take part in a range of activities supported by a team of experienced youth workers and volunteers.

7. Which Area Board are you applying to?

Trowbridge

Electoral Division

8. What is the Post Code of where the project is taking place?

SN12 7NY

9. Please tell us which theme(s) your project supports:

Informal education

Youth work/development

Sport/Leisure

Arts/Culture
 1:1/group work
 Community Project
 Community Safety
 Volunteering
 Environment
 Health

If Other (please specify)

10. Finance:

10a. Your Organisation's Finance:

Your latest accounts:

12/2018

Total Income:

£63322.00

Total Expenditure:

£73448.00

Surplus/Deficit for the year:

£-10126.00

Free reserves currently held:

(money not committed to other projects/operating costs)

£206.00

Why can't you fund this project from your reserves:

We do not hold adequate reserves to fully fund this project. Without supporting funding we will need to consider reducing the offer to a fortnightly or monthly club.

We are a small community group and do not have annual accounts or it is our first year:

10b. Project Finance:

Total Project cost		£12579.00	
Total required from Area Board		£1500.00	
Expenditure (Itemised expenditure)	£	Income (Itemised income)	Tick if income confirmed
Youth workers	9861.75	Club subs	yes 1440.00
Equipment/Activity costs	1125.00	Tuck shop sales	yes 72.00
Marketing	200.00	Volunteers	yes 3067.95

Use of the Canberra Centre	1350.00	Corsham Area Board		1500.00
Stock for tuck shop	43.20	Melksham Area Board	yes	5000.00
Total	£12579.95			£11079.95

11. Have you or do you intend to apply for a grant from another area board within this financial year?

Yes

12. If so, which Area Boards?

Corsham
Melksham

13. Please tell us WHO will benefit and HOW they will benefit from your project benefit your local community?

project_beneficiary PLACE HOLDER

14. How will you monitor this?

project_monitor PLACE HOLDER

15. If your project will continue after the Wiltshire Council funding runs out, how will you continue to fund it?

project_future PLACE HOLDER

16. Is there anything else you think we should know about the project?

project_additional PLACE HOLDER

17. DECLARATION

Supporting information - Please confirm that the following documents will be available to inspect upon request:

Quotes:

over1k_disp PLACE HOLDER I will make available on request 1 quote for individual project costs over £500 & 2 quotes for project costs over £1000 (Individual project costs are listed in the expenditure section above)

Other supporting information (Tick where appropriate, for some project these will not be applicable):

And finally...

yes The information on this form is correct, that any award received will be spent on the activities specified.

750	Youth	Trowbridge Club 1 Free Gym Referral Programme	Wiltshire Council	£4800.00
-----	-------	---	-------------------	----------

Submitted: 05/11/2019 15:39:54

ID: 750

Current Status: Application Appraisal

To be considered at this meeting:

tbc contact Community Area Manager

1. Which type of grant are you applying for?

Youth

2. Amount of funding required?

£501 - £5000

3. Are you applying on behalf of a Parish Council?

parish_council PLACE HOLDER

4. If yes, please state why this project cannot be funded from the Parish Precept

parish_precept PLACE HOLDER

5. Project title?

Trowbridge Club 1 Free Gym Referral Programme

6. Project summary:

Note This application is submitted from Wiltshire Councils Sports Development Service. Any grant awarded will not fund core service delivery. Funds awarded will be managed by the service to provide extra opportunity for young people in the community with no charge and 100 of the money will go to gym memberships for vulnerable young people within the Trowbridge community. The service will act as the manager of funds of which community referral agencies will apply into for young people including homeless shelters Motiv8 MENCAP etc. Therefore this would be a community-need project delivered in partnership with referral agencies working with local young people on the ground and the Sports Development service will manage the referrals and take up of the free gym memberships offering help advice or support this aspect will all be in kind. Aims Engage young people into positive solo activities specifically focusing on those who face barriers such as mental health poverty and other forms of exclusion. To meet the needs of groups of young people at greater risk of negative outcomes and whose engagement is often limited. To have a positive impact upon the long-term health of the vulnerable young people of Trowbridge through developing a culture of sustained physical activity participation. To work with young people & families who do not participate in sport currently who live in areas of high deprivation. Wiltshire Council Business Plan 2017-2027 Priorities and Goals. Strong Communities Personal Wellbeing. Protecting the vulnerable Early intervention. Working with partners Delivering together.

7. Which Area Board are you applying to?

Trowbridge

Electoral Division

8. What is the Post Code of where the project is taking place?

BA14 8AL

9. Please tell us which theme(s) your project supports:

Youth work/development

Sport/Leisure

Community Project

Community Safety

Health

If Other (please specify)

10. Finance:

10a. Your Organisation's Finance:

Your latest accounts:

01/2019

Total Income:

£0.00

Total Expenditure:

£0.00

Surplus/Deficit for the year:

£0.00

Free reserves currently held:

(money not committed to other projects/operating costs)

£0.00

Why can't you fund this project from your reserves:

We are a small community group and do not have annual accounts or it is our first year:

10b. Project Finance:

Total Project cost £4800.00

Total required from Area Board £4800.00

Expenditure		Income	
(Itemised	£	(Itemised	Tick if income
expenditure)		income)	confirmed
			£

16 Gym Annual Memberships	300.00	AB Funding	4800.00
Total	£300		£4800

11. Have you or do you intend to apply for a grant from another area board within this financial year?

No

12. If so, which Area Boards?

Trowbridge

13. Please tell us WHO will benefit and HOW they will benefit from your project benefit your local community?

project_beneficiary PLACE HOLDER

14. How will you monitor this?

project_monitor PLACE HOLDER

15. If your project will continue after the Wiltshire Council funding runs out, how will you continue to fund it?

project_future PLACE HOLDER

16. Is there anything else you think we should know about the project?

project_additional PLACE HOLDER

17. DECLARATION

Supporting information - Please confirm that the following documents will be available to inspect upon request:

Quotes:

over1k_disp PLACE HOLDER I will make available on request 1 quote for individual project costs over £500 & 2 quotes for project costs over £1000 (Individual project costs are listed in the expenditure section above)

Project/Business Plan:

yes I will make available on request a **project or business plan** (including estimates) for projects where the **total project cost** (as declared in the financial section above) exceeds £50,000 (tick only when total project cost exceeds £50,000).

Other supporting information (Tick where appropriate, for some project these will not be applicable):

And finally...

yes The information on this form is correct, that any award received will be spent on the activities specified.

This page is intentionally left blank